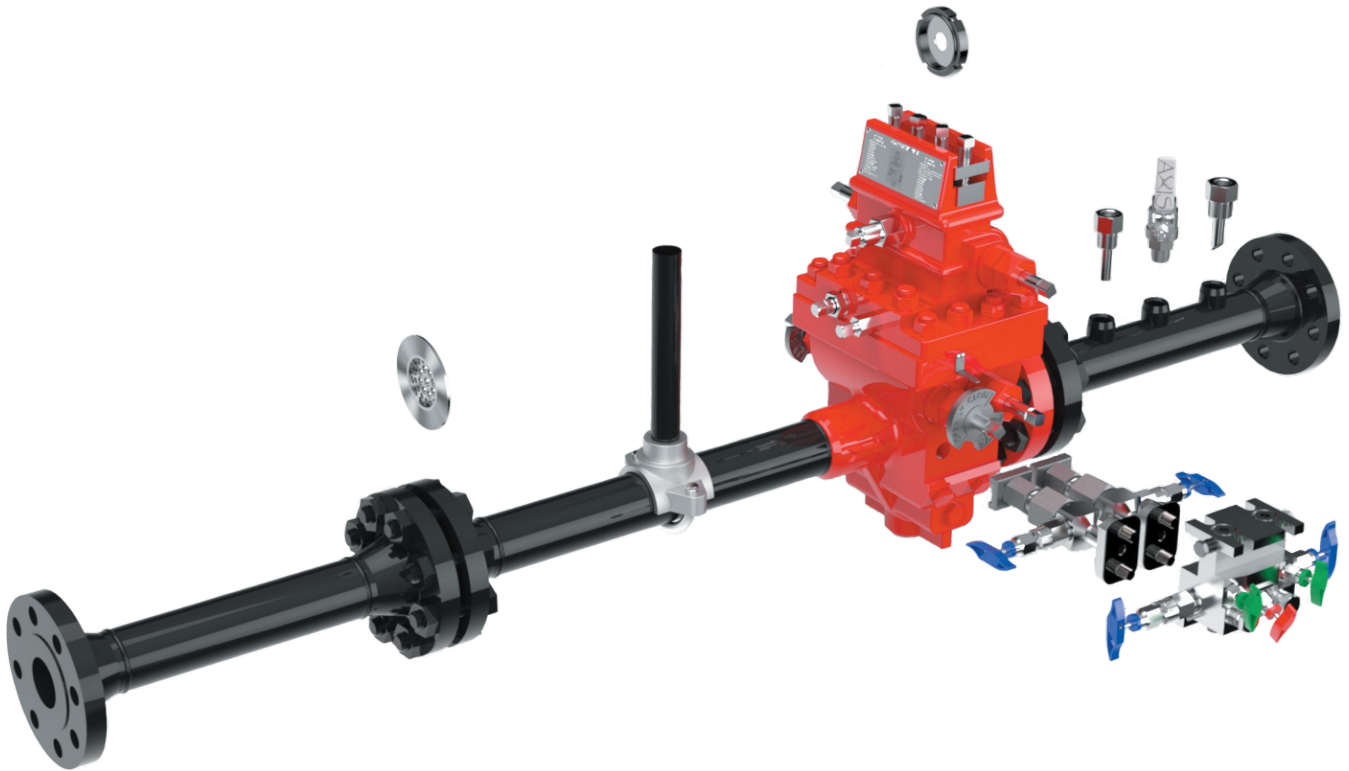




NATURAL GAS, PETROCHEMICAL INSTRUMENT PRODUCTS



**MANUFACTURING EXCELLENCE
IN GAS AND PETROCHEMICAL MEASUREMENT**

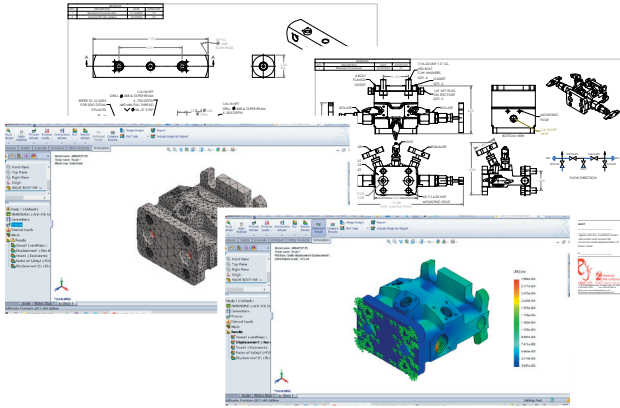
RJ MACHINE CO.





NATURAL GAS, PETROCHEMICAL INSTRUMENT PRODUCTS

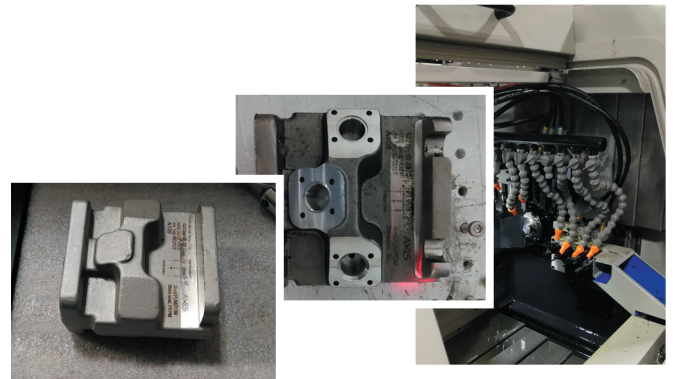
ENGINEERING DESIGN



RJ Machine Co. engineers address all industrial standards and codes for designing and testing the Axis product line. To ensure the technical integrity of our products, RJ Machine Co. engineers utilize the most current CAD/FEA systems for all product development. These disciplines and engineering procedures result in superior quality and innovation.

PRECISION MACHINING

RJ Machine Co. manufacturing teams use leading-edge CNC machining technology to accurately realize detailed engineering designs and specifications into close-tolerance, quality parts and products.



QUALITY ASSURANCE



From its ISO9001-2015 certified facilities, RJ Machine Co. employs rigid quality control and assurance procedures, offers full material traceability on all pressure containing parts as standard, and complies with all applicable testing specifications to ensure successful performance in field applications.



NATURAL GAS, PETROCHEMICAL INSTRUMENT PRODUCTS

Manifolds

Manifolds



Description	5-Valve manifolds
Bore Size	3/8" full bore
Configuration	Pipe x Flange, Flange x Flange
Rating	2,000 and 6,000 psi
Material	Carbon or Stainless Steel
Heat #	Stamped for material traceability.

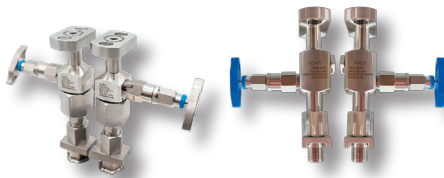
Gas Chromatograph Manifolds



Description	Designed to facilitate the easy installation and replacement of gas carrier cylinders for gas chromatograph installations. The valve is incorporated with two block valves, two purge valves, and a built-in mounting bracket.
Bore Size	3/16"
Configuration	1/4" FNPT x 1/4" FNPT
Rating	6,000 psi
Material	Carbon or Stainless Steel
Heat #	Stamped for material traceability.

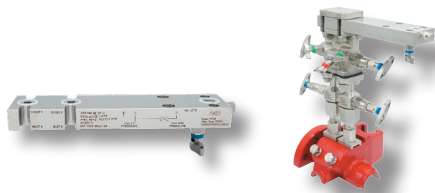
Direct Mount Systems

Stabilizers



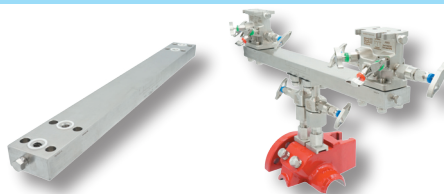
Description	Two piece with valves, one piece with valves, both available as valveless. Stabilizers without valves are offered in both long (7") and short (5") versions.
Bore Size	3/8" full bore
Configuration	1/2" MNPT x 2-Bolt Flange
Rating	2,000 and 6,000 psi
Material	Carbon or Stainless Steel
Heat #	Stamped for material traceability.

DP to GP adapter



Description	Allows both DP and GP transmitters to be installed on a single set of instrument taps.
Bore Size	3/8" bore for DP Transmitter. 3/16" bore for GP Transmitter.
Rating	6,000 psi
Material	Carbon or Stainless Steel
Heat #	Stamped for material traceability.

Dual DP adapter



Description	Allows two DP transmitters to be installed on a single set of instrument taps.
Bore Size	3/8" bore for DP Transmitter.
Rating	6,000 psi
Material	Carbon or Stainless Steel
Heat #	Stamped for material traceability.



NATURAL GAS, PETROCHEMICAL INSTRUMENT PRODUCTS

Instrument Valves and Gauges

Mini Gas Valves



Description	Mini gas valve.
Size	1/4" connections
Configuration	FNPT and MNPT inlet and outlet, optional quick calibration connections.
Rating	6,000 psi (POM soft seat)
Material	Carbon or Stainless Steel
Heat #	Stamped for material traceability.

Ball Valves



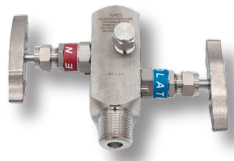
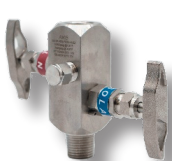
Description	Ball valves. One-piece and two-piece (seal welded) valve body.
Size	1/4" ~ 2" connections
Configuration	Female x Female, Male x Female
Rating	2,000 psi for two-piece ball valve, full and reduced port 1,000 psi for one-piece ball valve
Material	Stainless Steel

Needle Valves



Description	Needle Valves.
Size	1/4" and 1/2" inlet and outlet
Configuration	Male x Female and Female x Female
Rating	6,000 psi
Material	Stainless Steel
Heat #	Stamped for material traceability.

Block and Bleed Valves



Description	Block and Bleed Valve.
Size	1/2" and 3/4" outlet size, 1/2" inlet size
Rating	6,000 and 10,000 psi
Material	Carbon or Stainless Steel
Heat #	Stamped for material traceability.



NATURAL GAS, PETROCHEMICAL INSTRUMENT PRODUCTS

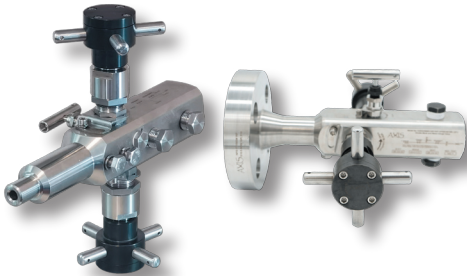
Instrument Valves and Gauges

Multiport Gauge Valves



Description	Multiport Gauge Valves, bleed plugs available.
Bore Size	3/16"
Configuration	1/2" inlet and outlet
Rating	6,000 and 10,000 psi
Material	Carbon or Stainless Steel
Heat #	Stamped for material traceability.

Severe Service Valves



Description	Severe Service Valves, non-rotating ball stems on two blocks. Comply with ASME B31.3, B31.1.
Bore Size	3/8" bore
Size	1/2", 3/4", and 1" inlet and outlet
Configuration	Male x Female, Male Socket Weld x Female, Flange x Female, Flange x Flange, Compact Flange x Female.
Rating	6,000 psi
Max. Temp.	1,000°F for stainless steel. 800°F for carbon steel.
Material	Carbon or Stainless Steel. Other materials available.
Heat #	Stamped for material traceability.

Liquid Filled Gauges



Description	Liquid filled gauges.
Size	2.5" and 4"
Mount Style	Bottom mount. Back mount available for 2.5" gauges
Range	30 ~ 5,000 psi
Material	Stainless Steel

Sample Probes, Thermowells, and Testwells



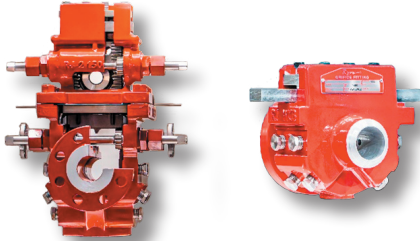
Description	Sample Probes, Thermowells, and Testwells.
Size	2" - 10" Insertion Lengths
Rating	Comply with piping systems
Material	304 and 316 Stainless Steel
Heat #	Stamped for material traceability.



NATURAL GAS, PETROCHEMICAL INSTRUMENT PRODUCTS

Orifice Measurement

Dual and Single Chamber Orifice Fittings



Description	Dual and Single Chamber Orifice Fittings
Size	2" - 6", Class 600, Schedule 40 or 80.
Configuration	Single Chambers are available in Weld x Weld and Weld x Flange configurations with Old Style (WxW) and Notched (WxF) plate carrier options. Dual Chambers available in Weld x Flange configurations with Notched plate carrier API 14.3 compliant with NACE trim, Hydro Tested at 1.5x CWP.
Heat #	Stamped for material traceability.

Orifice Plates



Description	Orifice Plates.
Size	2"-24"
Configuration	Universal and Paddle Style.
Material	316 Domestic Stainless Steel.
Heat#/Serial#	Stamped for material traceability.

Parts and Fitting Repair Kit



Description	Parts and Fitting Repair Kit
Size	2" - 24"
Configuration	Old Style (85 Edition) Kits are available in 2"-24" Line Sizes. New Style (API 14.3, Notched) Kits are available in 2"-8" Line Sizes. Dual and Single Chamber repair kits are available, and which can be interchangeable with Daniel Senior, Junior and Simplex fittings.

Seal Rings



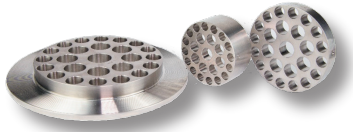
Description	Seal Rings
Size	2" - 18"
Configuration	API 14.3 Edition Notched (sized 2"-8" only) and 85 Edition Old Style Seal Rings (sizes 2"-18").
Material	Nitrile, HNBR, FKM, or PTFE



NATURAL GAS, PETROCHEMICAL INSTRUMENT PRODUCTS

Meter Tube Accessories

Flow Conditioners



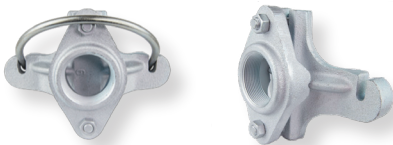
Description	RJ Machine manufactures the universally accepted design for the Laws/ K-Lab/NOVA-50E type flow conditioner.
Size	2" - 36"
Configuration	Flange Type (2"-36"), Pin Type (2"-4" only), Long Pin Type (2"-4" only).
Rating	6,000 psi
Material	316 Stainless Steel
Heat #	Stamped for material traceability.

Companion Flanges



Description	ASME B16.5 flange series
Size	2" - 12"
Configuration	ASME B16.5 types
Rating	Class 600, for Schedule 40 or 80
Material	Stainless Steel
Heat #	Stamped for material traceability.

Leveling Saddles



Description	Used for mounting chart recorders, solar panels, or antennas and will accommodate any 2" NPT attachment. U-Bolts included.
Size	2" - 12"



NATURAL GAS, PETROCHEMICAL INSTRUMENT PRODUCTS

Design Standards	
Standard	Description
ASME B31.1	Power Piping
ASME B31.3	Process Piping
ASME B16.34	Valves - Flanged, Thread, and Welding End
ISO 5208	Industrial valves - Pressure testing of metallic valves
API 598	Valve Inspection and Testing
MSS SP-105	Instrument Valves for Code Application
MSS SP-25	Standard Marking Systems for Valves, Fittings, and Flanged Unions
IEC 61518	Mating dimensions between differential pressure (type) measuring instruments and flanged-on shut-off devices up to 413 bar (41,3 MPa)
ISO10474	Steel and steel products - Inspection documents

Notes

Contact information:

RJ Machine Co.
 Corporate: 112 Northridge Road, Marble Falls, TX 78654
 Office: 830.693.7493
 Fax: 830.693.8614
 Web: www.rjmachineonline.com
 Order Online: www.shoprjmachine.com

Representative/Distributor information:

The information contained herein is intended to be used as a guide to assist with product and service selection. While reasonable efforts have been made to ensure the accuracy and completeness of the content, RJ Machine Co. makes no representations as to the completeness or accuracy of the information contained herein. The customer is solely responsible for evaluating and selecting products and ensuring that all performance, safety and warning requirements are satisfied. RJ MACHINE CO. MAKES NO REPRESENTATIONS OR WARRANTIES, EITHER EXPRESS OR IMPLIED, INCLUDING WITHOUT LIMITATION ANY WARRANTIES OF MERCHANTABILITY OR FITNESS FOR A PARTICULAR PURPOSE WITH RESPECT TO THE INFORMATION SET FORTH HEREIN OR THE PRODUCT(S) TO WHICH THE INFORMATION REFERS. ACCORDINGLY, RJ MACHINE CO. SHALL NOT BE RESPONSIBLE FOR DAMAGES (OF ANY KIND OR NATURE, INCLUDING INCIDENTAL, INDIRECT, OR CONSEQUENTIAL DAMAGES) RESULTING FROM THE USE OF OR RELIANCE UPON THIS INFORMATION. Patents and Patents Pending in the U.S. and foreign countries. The products and specifications set forth in this brochure are subject to change without notice and RJ Machine Co. disclaims any and all liability for such changes. All third party trademarks including but not limited to logos, numbers and names referenced herein remain the property of their respective owners. Unless otherwise specifically identified as such, RJ Machine Co.'s use of third party trademarks does not indicate any relationship, sponsorship or endorsement between RJ Machine Co. and the owners of the trademarks. Any reference by RJ Machine Co. to third party trademarks is to identify the corresponding goods and shall be considered nominative fair use under applicable trademark law.
 © 2023 by RJ Machine Co. All rights reserved. Material in this brochure or catalogue may not be reproduced in whole or in part, in any form, without written permission from the publisher.



MACHINE.CO.

**MANUFACTURING EXCELLENCE
IN GAS AND PETROCHEMICAL MEASUREMENT**

RJ MACHINE CO.



**International
IBC Body Certification**

ISO 9001:2015