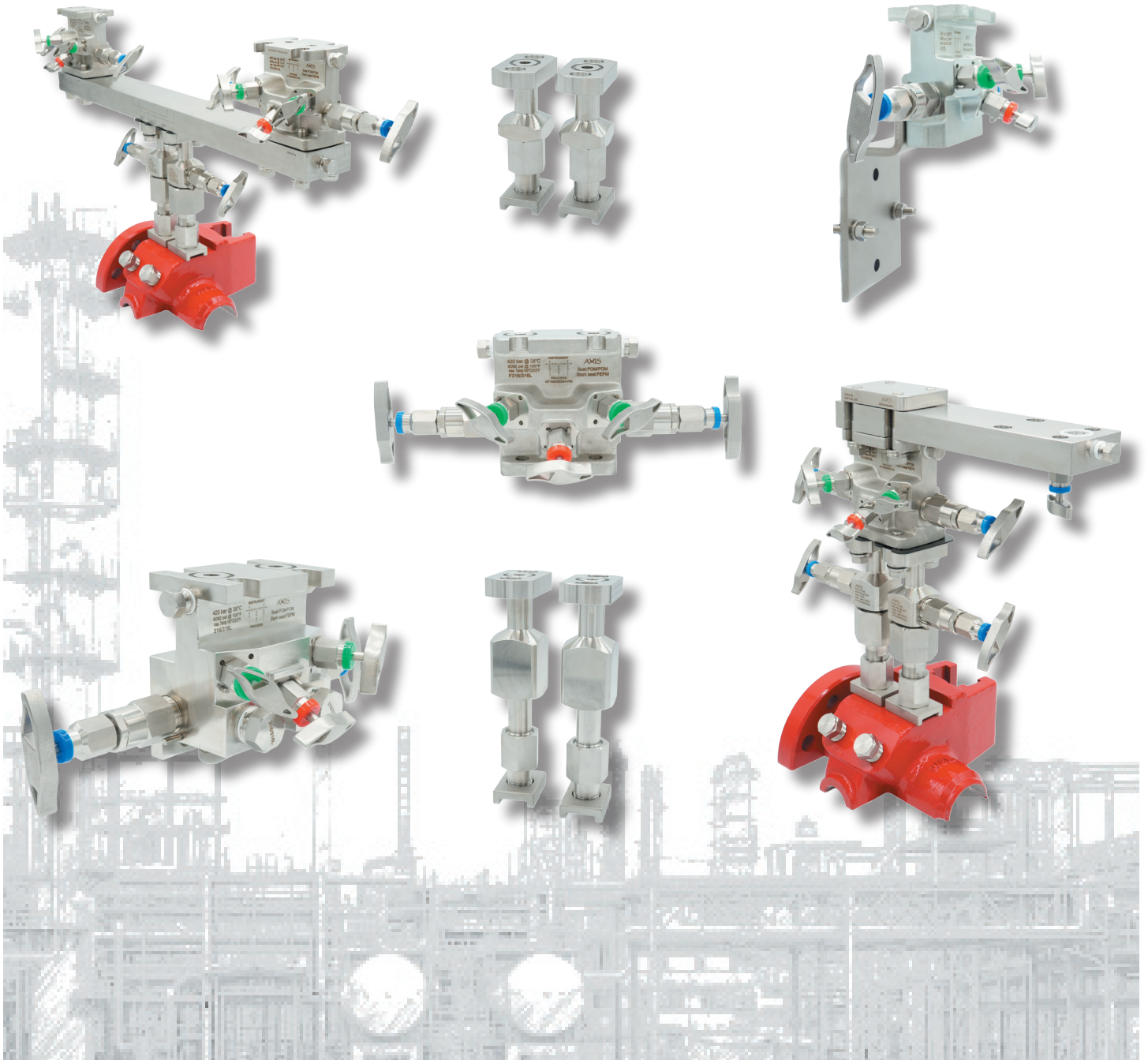




# NATURAL GAS INSTRUMENT VALVES & MANIFOLDS



**MANUFACTURING EXCELLENCE  
IN GAS AND PETROCHEMICAL MEASUREMENT**

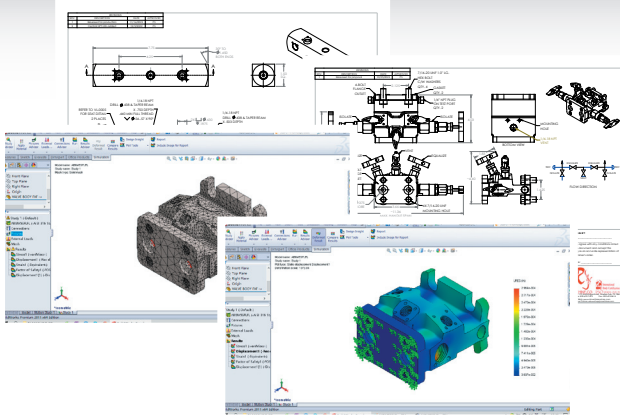
**RJ MACHINE CO.**





# NATURAL GAS INSTRUMENT VALVES & MANIFOLDS

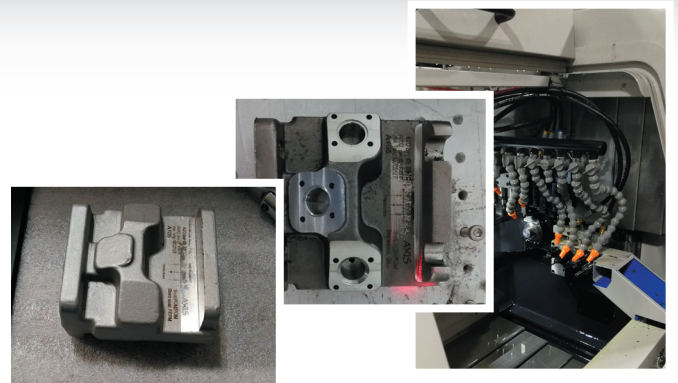
## ENGINEERING DESIGN



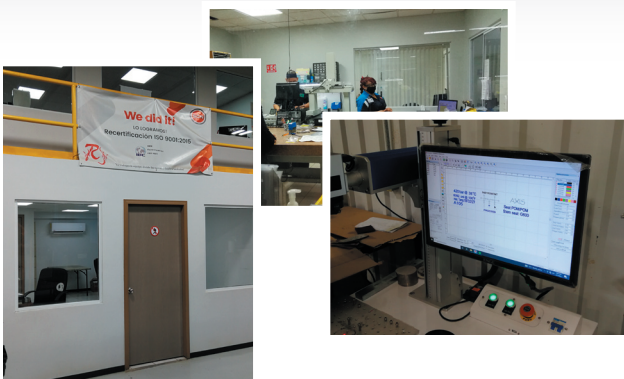
RJ Machine Co. engineers address all industrial standards and codes for designing and testing the Axis product line. To ensure the technical integrity of our products, RJ Machine Co. engineers utilize the most current CAD/FEA systems for all product development. These disciplines and engineering procedures result in superior quality and innovation.

## PRECISION MACHINING

RJ Machine Co. manufacturing teams use leading-edge CNC machining technology to accurately realize detailed engineering designs and specifications into close-tolerance, quality parts and products.



## QUALITY ASSURANCE



From its ISO9001-2015 certified facilities, RJ Machine Co. employs rigid quality control and assurance procedures, offers full material traceability on all pressure containing parts as standard, and complies with all applicable testing specifications to ensure successful performance in field applications.



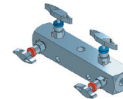
# NATURAL GAS INSTRUMENT VALVES & MANIFOLDS

## TABLE OF CONTENTS

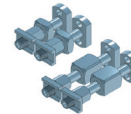
MINI GAS VALVE.....



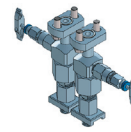
GAS CHROMATOGRAPH MANIFOLD.....



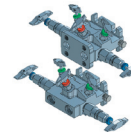
STABILIZED FUTBOLS.....



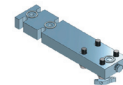
STABILIZED CONNECTORS WITH ISOLATE VALVE.....



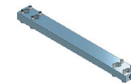
5-VALVE GAS MANIFOLD.....



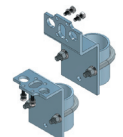
DP TO GP ADAPTER.....



DUAL DELTA P ADAPTER.....



MOUNTING BRACKETS.....



SPARE PARTS AND KITS.....





# NATURAL GAS INSTRUMENT VALVES & MANIFOLDS

---

---

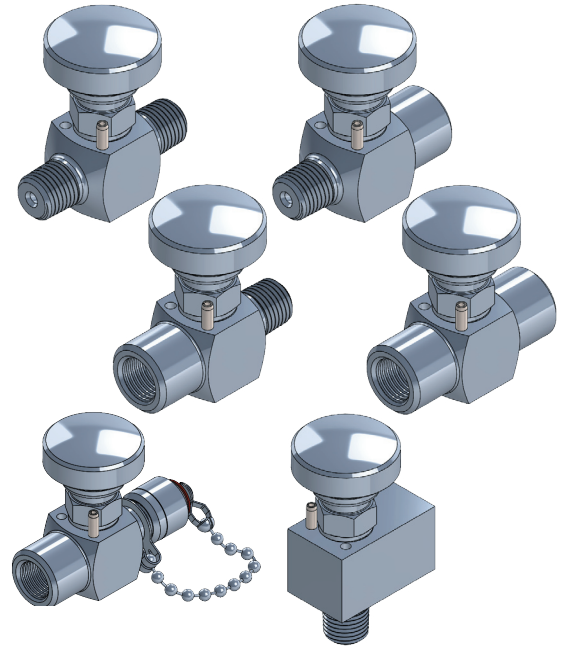
## NOTES



# AX2N6G 1/8" ORIFICE MINI GAS VALVE

## 1/8" Orifice Mini Gas Valve

The AX2N6G is the perfect valve choice for sampling and calibration. It features a double O-ring and PTFE backup ring design below the threads, blowout proof stem, back seating capability, and a unique pancake seat design for pressures up to 6000 PSIG. The valves are available with FNPT & MNPT inlet and outlet connections and optional quick calibration connections. It's robust design lasts 10x longer than average mini valves and has been shown to be superior in holding hard to contain gases such as helium.



## Features and Benefits:

- ▶ 100% testing ensures blow out proof stem and seat tightness.
- ▶ Double O-ring packing below stem threads prevents corrosion.
- ▶ Stem threads formed by rolling provide improved strength and smooth operation.
- ▶ Stem flat tip and the soft seat forms a globe pattern seal to ensure zero leakage at seat for proper calibration.
- ▶ Body to bonnet seal in compression isolates the bonnet threads from the process fluid to prevent corrosion and tensile breakage.
- ▶ Unique soft seat design allows pressure up to 6000 PSIG.
- ▶ Bodies and bonnets are lot code stamped to provide full material traceability.



MACHINE.CO.

**MANUFACTURING EXCELLENCE  
IN GAS AND PETROCHEMICAL MEASUREMENT**

**RJ MACHINE CO.**



International  
**IBC** Body Certification

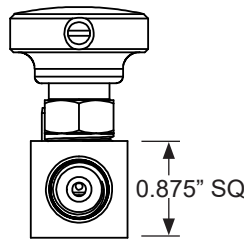
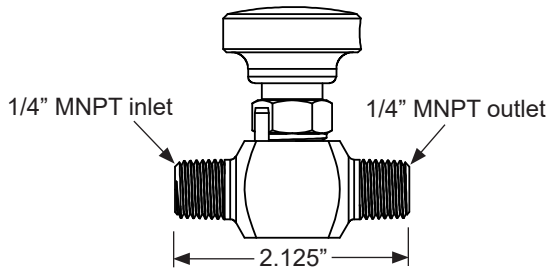
ISO 9001:2015



# AX2N6G 1/8" ORIFICE MINI GAS VALVE

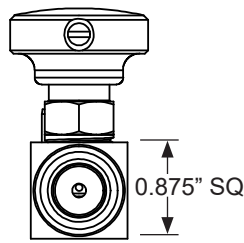
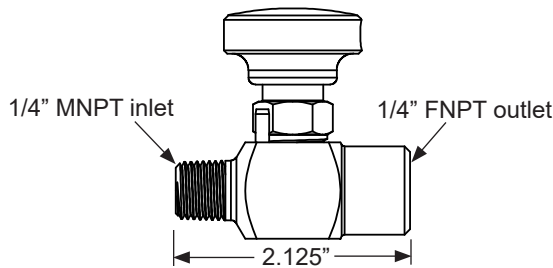
## Technical Specification

### Male NPT x Male NPT Configuration



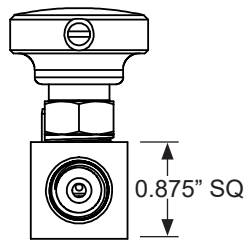
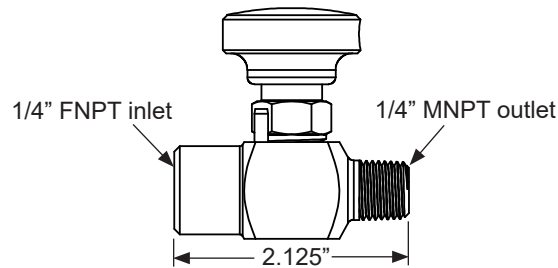
Specification	
Model	AX2N6G4M4MXXXX
Orifice	1/8"
Rating	POM, PEEK seat: 6000 psi at 100°F, 414 bar at 38°C
Seat	Soft seat, POM, PEEK
Packing	O-ring, FEPM, or, FKM
Inlet	1/4" male NPT
Outlet	1/4" male NPT

### Male NPT x Female NPT Configuration



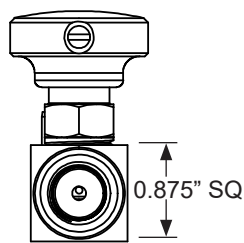
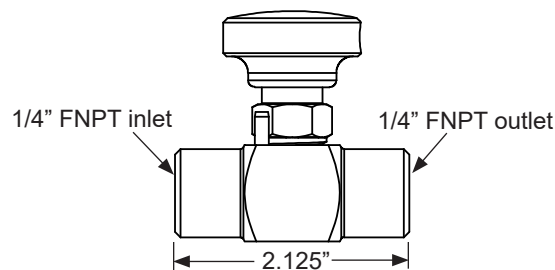
Specification	
Model	AX2N6G4M4PXXXX
Orifice	1/8"
Rating	POM, PEEK seat: 6000 psi at 100°F, 414 bar at 38°C
Seat	Soft seat, POM, PEEK
Packing	O-ring, FEPM, or, FKM
Inlet	1/4" male NPT
Outlet	1/4" female NPT

### Female NPT x Male NPT Configuration



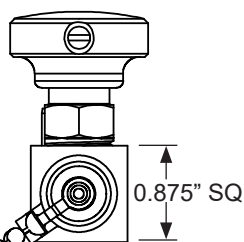
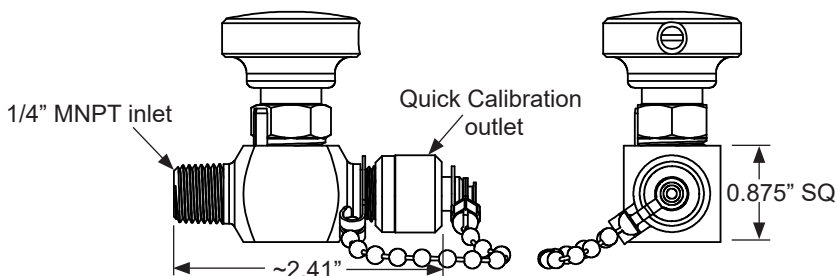
Specification	
Model	AX2N6G4P4MXXXX
Orifice	1/8"
Rating	POM, PEEK seat: 6000 psi at 100°F, 414 bar at 38°C
Seat	Soft seat, POM, PEEK
Packing	O-ring, FEPM, or, FKM
Inlet	1/4" female NPT
Outlet	1/4" male NPT

### Female NPT x Female NPT Configuration



Specification	
Model	AX2N6G4P4PXXXX
Orifice	1/8"
Rating	POM, PEEK seat: 6000 psi at 100°F, 414 bar at 38°C
Seat	Soft seat, POM, PEEK
Packing	O-ring, FEPM, or, FKM
Inlet	1/4" female NPT
Outlet	1/4" female NPT

### Male NPT x Quick Calibration Fitting Configuration



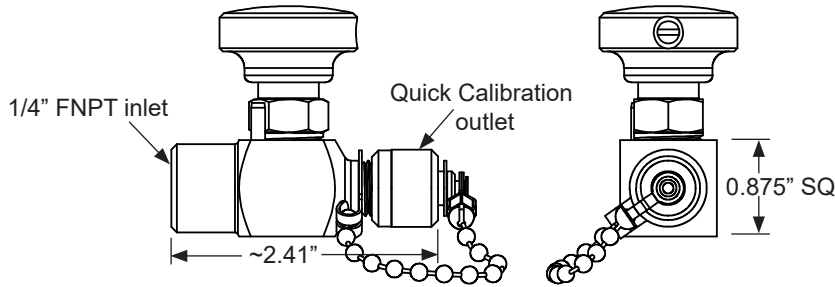
Specification	
Model	AX2N6G4MQXXXX
Orifice	1/8"
Rating	POM, PEEK seat: 5000 psi at 100°F, 345 bar at 38°C
Seat	Soft seat, POM, PEEK
Packing	O-ring, FEPM, or, FKM
Inlet	1/4" male NPT
Outlet	Quick Calibration fitting



# AX2N6G 1/8" ORIFICE MINI GAS VALVE

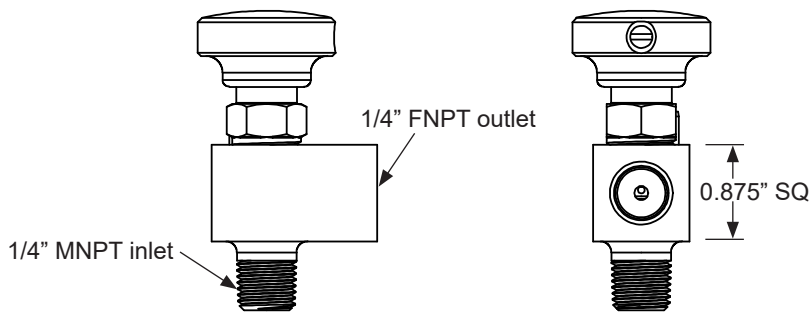
## Valve Detail Information

### Female NPT x Quick Calibration Fitting Configuration



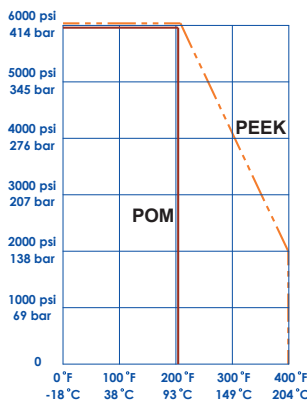
Specification	
Model	AX2N6G4PQXXXX
Orifice	1/8"
Rating	POM, PEEK seat: 5000 psi at 100°F, 345 bar at 38°C
Seat	Soft seat, POM, PEEK
Packing	O-ring, FEPM, or, FKM
Inlet	1/4" female NPT
Outlet	Quick Calibration fitting

### Male NPT x Female NPT Angle Configuration



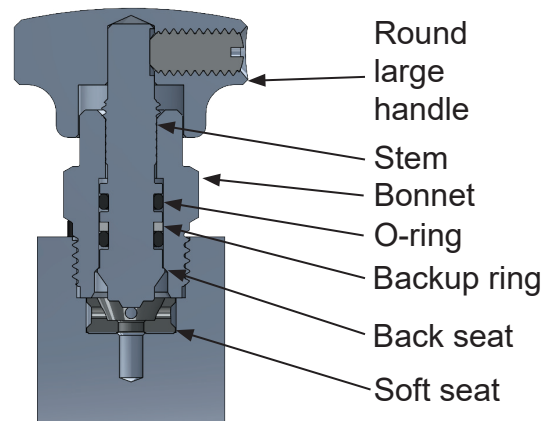
Specification	
Model	AX2NA6G4M4PXXXX
Orifice	1/8"
Rating	POM, PEEK seat: 6000 psi at 100°F, 414 bar at 38°C
Seat	Soft seat, POM, PEEK
Packing	O-ring, FEPM, or, FKM
Inlet	1/4" male NPT
Outlet	1/4" female NPT

Pressure vs. Temperature Chart for Soft Seat Materials



Note: soft seat material ratings are based on manufacturers' specifications, for reference only.

### Bonnet Details



Bonnet Configuration



# AX2N6G 1/8" ORIFICE MINI GAS VALVE

## Product Numbering and Contact Information

### Product Numbering

Brand	Orifice	Type	Inlet Size	Inlet Type	Outlet Size	Outlet Type	Material	Packing	Seat	Option
<b>AX</b>	<b>2</b> 1/8"	<b>N6G</b> Gas valve	<b>4</b> 1/4"	<b>M</b> Male NPT	<b>4</b> 1/4"	<b>M</b> Male NPT	<b>SS</b> ASTM A182 Gr. 316	<b>A</b> O-ring FEPM	<b>D</b> Soft seat POM	<b>RLR</b> Round large red handle
		<b>NA6G</b> Gas valve, angle body		<b>P</b> Female NPT		<b>P</b> Female NPT	<b>CS</b> ASTM A105 (Zinc plated)	<b>V</b> O-ring FKM	<b>P</b> Soft seat PEEK	<b>TG</b> 304 SS TAG (note 1)
						<b>Q</b> Quick Cali- bration				

Example: model number **AX2N6G4M4PSSAD** is interpreted as,  
Gas valve, 1/8" orifice, 1/4" male NPT inlet, 1/4" female NPT outlet, ASTM A182 Gr. 316 material for all pressure containing components, FEPM O-ring packing, POM soft seat.

Note1: 32 Character limit laser marked.

### Packing and Seat Temperature Rating

Code	Component	Material	Min. Temp.	Max. Temp.
A	O-ring	FEPM	-4°F [-20°C]	400°F [204°C]
V	O-ring	FKM	-15°F [-26°C]	400°F [204°C]
D	Seat	POM	-40°F [-40°C]	200°F [93°C]
P	Seat	PEEK	-40°F [-40°C]	400°F [204°C]

### Standard Compliances

Standard	Description
ASME B31.1	Power Piping
ASME B31.3	Process Piping
ASME B16.34	Valves - Flanged, Thread, and Welding End
ISO 5208	Industrial valves - Pressure testing of metallic valves
API 598	Valve Inspection and Testing
MSS SP-105	Instrument Valves for Code Application
MSS SP-25	Standard Marking Systems for Valves, Fittings, and Flanged Unions
IEC 61518	Mating dimensions between differential pressure (type) measuring instruments and flanged-on shut-off devices up to 413 bar (41,3 MPa)
ISO10474	Steel and steel products - Inspection documents

### Contact information:

RJ Machine Co.  
Corporate: 112 Northridge Road, Marble Falls, TX 78654  
Office: 830.693.7493  
Fax: 830.693.8614  
Web: [www.rjmachineonline.com](http://www.rjmachineonline.com)  
Order Online: [www.shoprjmachine.com](http://www.shoprjmachine.com)

### Representative/Distributor information:

The information contained herein is intended to be used as a guide to assist with product and service selection. While reasonable efforts have been made to ensure the accuracy and completeness of the content, RJ Machine Co. makes no representations as to the completeness or accuracy of the information contained herein. The customer is solely responsible for evaluating and selecting products and ensuring that all performance, safety and warning requirements are satisfied. RJ MACHINE CO. MAKES NO REPRESENTATIONS OR WARRANTIES, EITHER EXPRESS OR IMPLIED, INCLUDING WITHOUT LIMITATION ANY WARRANTIES OF MERCHANTABILITY OR FITNESS FOR A PARTICULAR PURPOSE WITH RESPECT TO THE INFORMATION SET FORTH HEREIN OR THE PRODUCT(S) TO WHICH THE INFORMATION REFERS. ACCORDINGLY, RJ MACHINE CO. SHALL NOT BE RESPONSIBLE FOR DAMAGES (OF ANY KIND OR NATURE, INCLUDING INCIDENTAL, INDIRECT, OR CONSEQUENTIAL DAMAGES) RESULTING FROM THE USE OF OR RELIANCE UPON THIS INFORMATION. Patents and Patents Pending in the U.S. and foreign countries. The products and specifications set forth in this brochure are subject to change without notice and RJ Machine Co. disclaims any and all liability for such changes. All third party trademarks including but not limited to logos, numbers and names referenced herein remain the property of their respective owners. Unless otherwise specifically identified as such, RJ Machine Co.'s use of third party trademarks does not indicate any relationship, sponsorship or endorsement between RJ Machine Co. and the owners of the trademarks. Any reference by RJ Machine Co. to third party trademarks is to identify the corresponding goods and shall be considered nominative fair use under applicable trademark law.  
© 2023 by RJ Machine Co. All rights reserved. Material in this brochure or catalogue may not be reproduced in whole or in part, in any form, without written permission from the publisher.



MACHINE.CO.

**MANUFACTURING EXCELLENCE  
IN GAS AND PETROCHEMICAL MEASUREMENT**

**RJ MACHINE CO.**



**International  
IBC Body Certification**

**ISO 9001:2015**

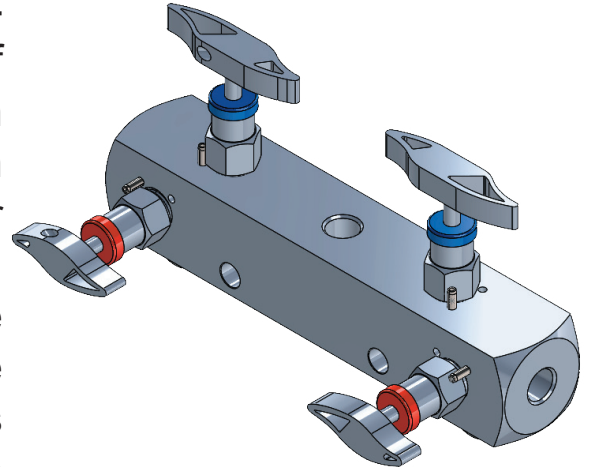




# AX3GC4S GAS CHROMATOGRAPH MANIFOLD

## 3/16" Orifice GC Manifold

The AX3GC4S manifold is designed to facilitate the easy installation and replacement of gas carrier cylinders for gas chromatograph installations. The manifold is designed with two block valves, two purge valves (one for each cylinder), and a built-in mounting bracket. The manifold construction eliminates multiple points. The AX3GC4S is a simple, effective switchover manifold system that eliminates leaks of hard-to-contain helium and provides quick, easy installation.



## Features and Benefits:

- ▶ 100% testing ensures blow out proof stem and seat tightness.
- ▶ Double O-ring packing below stem threads prevents corrosion.
- ▶ Stem threads formed by rolling provide improved strength and smooth operation.
- ▶ Cone tip stem (3/16" orifice) and flat tip stem (1/8" orifice) and the soft seat forms a tight seal to ensure zero leakage at seats.
- ▶ Body to bonnet seal in compression isolates the bonnet threads from the process fluid to prevent corrosion and tensile breakage.
- ▶ Unique soft seat design allows pressure up to 6000 PSIG.
- ▶ Bodies and bonnets are lot code stamped to provide full material traceability.



**MANUFACTURING EXCELLENCE  
IN GAS AND PETROCHEMICAL MEASUREMENT**

**RJ MACHINE CO.**

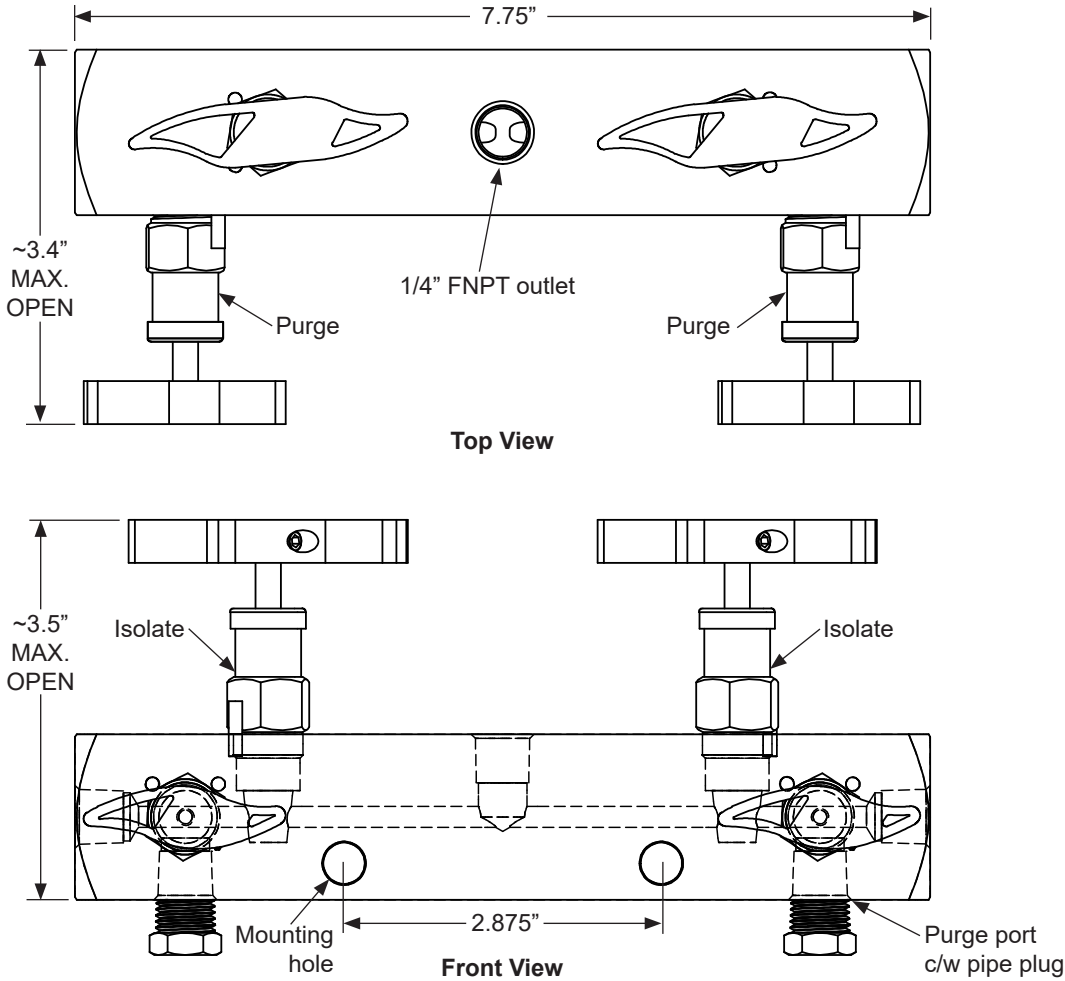




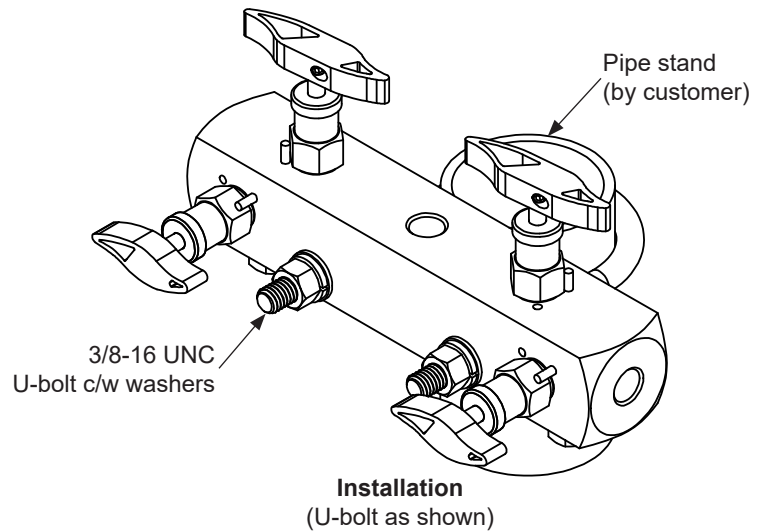
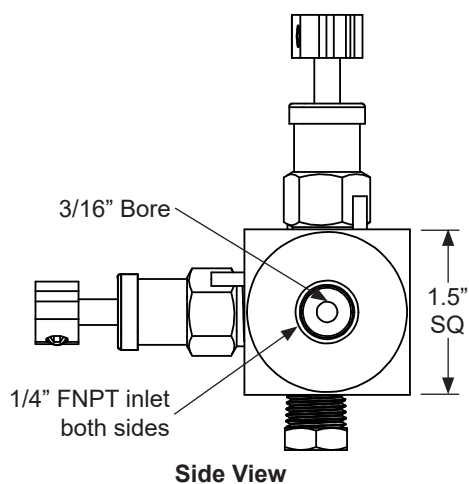
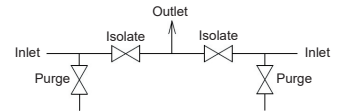
# AX3GC4S GAS CHROMATOGRAPH MANIFOLD

## Technical Specification

### Pipe to Pipe Configuration



Specification	
Model	AX3GC4S4P4PXXXX
Orifice	3/16"
Rating	POM, PEEK seat: 6000 psi at 100°F 414 bar at 38°C
Seat	Soft seat, POM, PEEK
Packing	O-ring, FEPM, or, FKM
Stem	Cone tip, flat tip
Inlet	1/4" female NPT
Outlet	1/4" female NPT
Handle	Removable
Body	Forging
Weight	~ 5 lb. 9.7 oz. (2.54 kg)

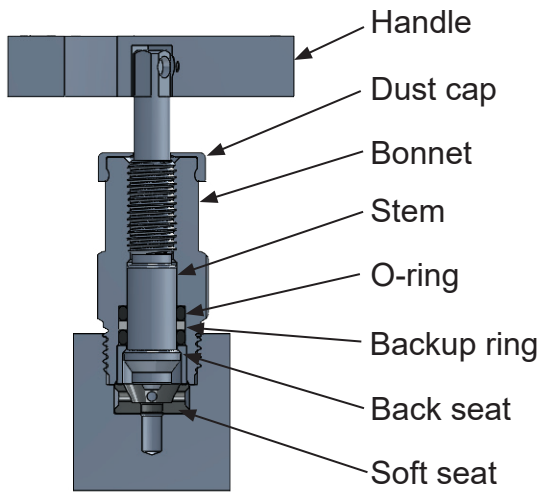




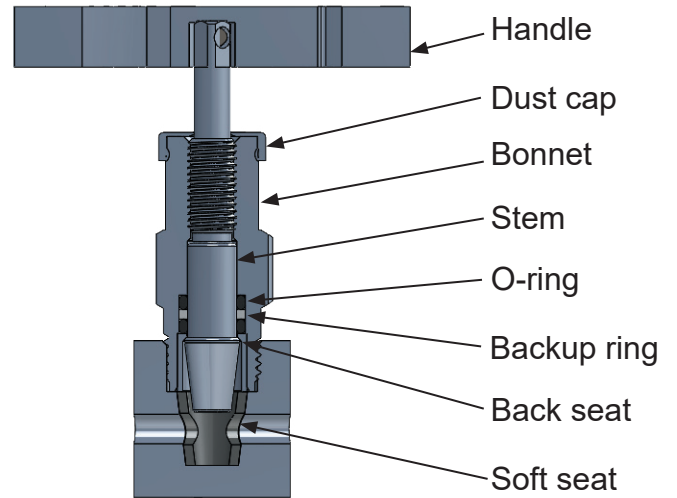
# AX3GC4S GAS CHROMATOGRAPH MANIFOLD

## Valve Detail Information

### Bonnet Details

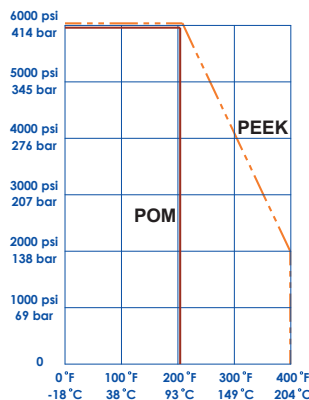


1/8" Bore O-ring Bonnet Configuration



3/16" Bore O-ring Bonnet Configuration

Pressure vs. Temperature Chart  
for Soft Seat Materials



Note: soft seat material ratings are based on manufacturers' specifications, for reference only.

Packing and Seat Temperature Rating

Code	Component	Material	Min. Temp.	Max. Temp.
A	O-ring	FEPM	-4°F [-20°C]	400°F [204°C]
V	O-ring	FKM	-15°F [-26°C]	400°F [204°C]
D	Seat	POM	-40°F [-40°C]	200°F [93°C]
P	Seat	PEEK	-40°F [-40°C]	400°F [204°C]



# AX3GC4S GAS CHROMATOGRAPH MANIFOLD

## Product Numbering and Contact Information

Product Numbering										
Brand	Orifice	Type	Inlet Size	Inlet Type	Outlet Size	Outlet Type	Material	Packing	Seat	Option
<b>AX</b>	<b>3</b> 3/16"	<b>GC4S</b> Gas Chromatograph manifold	<b>4</b> 1/4"	<b>P</b> Female NPT	<b>4</b> 1/4"	<b>P</b> Female NPT	<b>SS</b> ASTM A182 Gr. 316	<b>A</b> O-ring FEPM	<b>D</b> Soft seat POM	<b>RLR</b> Round large red handle
							<b>CS</b> ASTM A105 (Zinc plated)	<b>V</b> O-ring FKM	<b>P</b> Soft seat PEEK	<b>TG</b> 304 SS TAG (note 1)

Example: model number **AX3GC4S4P4PSSAD** is interpreted as,  
Gas chromatograph manifold, 3/16" orifice, 1/4" female NPT inlet, 1/4" female NPT outlet, ASTM A182 Gr. 316 material for all pressure containing components, FEPM O-ring packing, POM soft seat.

Note1: 32 Character limit laser marked.

Standard Compliances	
Standard	Description
ASME B31.1	Power Piping
ASME B31.3	Process Piping
ASME B16.34	Valves - Flanged, Thread, and Welding End
ISO 5208	Industrial Valves - Pressure testing of metallic valves
API 598	Valve Inspection and Testing
MSS SP-105	Instrument Valves for Code Application
MSS SP-25	Standard Marking Systems for Valves, Fittings, and Flanged Unions
IEC 61518	Mating dimensions between differential pressure (type) measuring instruments and flanged-on shut-off devices up to 413 bar (41,3 MPa)
ISO10474	Steel and Steel Products - Inspection documents

### Contact information:

RJ Machine Co.  
 Corporate: 112 Northridge Road, Marble Falls, TX 78654  
 Office: 830.693.7493  
 Fax: 830.693.8614  
 Web: [www.rjmachineonline.com](http://www.rjmachineonline.com)  
 Order Online: [www.shoprjmachine.com](http://www.shoprjmachine.com)

### Representative/Distributor information:

The information contained herein is intended to be used as a guide to assist with product and service selection. While reasonable efforts have been made to ensure the accuracy and completeness of the content, RJ Machine Co. makes no representations as to the completeness or accuracy of the information contained herein. The customer is solely responsible for evaluating and selecting products and ensuring that all performance, safety and warning requirements are satisfied. RJ MACHINE CO. MAKES NO REPRESENTATIONS OR WARRANTIES, EITHER EXPRESS OR IMPLIED, INCLUDING WITHOUT LIMITATION ANY WARRANTIES OF MERCHANTABILITY OR FITNESS FOR A PARTICULAR PURPOSE WITH RESPECT TO THE INFORMATION SET FORTH HEREIN OR THE PRODUCT(S) TO WHICH THE INFORMATION REFERS. ACCORDINGLY, RJ MACHINE CO. SHALL NOT BE RESPONSIBLE FOR DAMAGES (OF ANY KIND OR NATURE, INCLUDING INCIDENTAL, INDIRECT, OR CONSEQUENTIAL DAMAGES) RESULTING FROM THE USE OF OR RELIANCE UPON THIS INFORMATION. Patents and Patents Pending in the U.S. and foreign countries. The products and specifications set forth in this brochure are subject to change without notice and RJ Machine Co. disclaims any and all liability for such changes. All third party trademarks including but not limited to logos, numbers and names referenced herein remain the property of their respective owners. Unless otherwise specifically identified as such, RJ Machine Co.'s use of third party trademarks does not indicate any relationship, sponsorship or endorsement between RJ Machine Co. and the owners of the trademarks. Any reference by RJ Machine Co. to third party trademarks is to identify the corresponding goods and shall be considered nominative fair use under applicable trademark law.  
 © 2023 by RJ Machine Co. All rights reserved. Material in this brochure or catalogue may not be reproduced in whole or in part, in any form, without written permission from the publisher.



MACHINE.CO.

**MANUFACTURING EXCELLENCE  
 IN GAS AND PETROCHEMICAL MEASUREMENT**

**RJ MACHINE CO.**



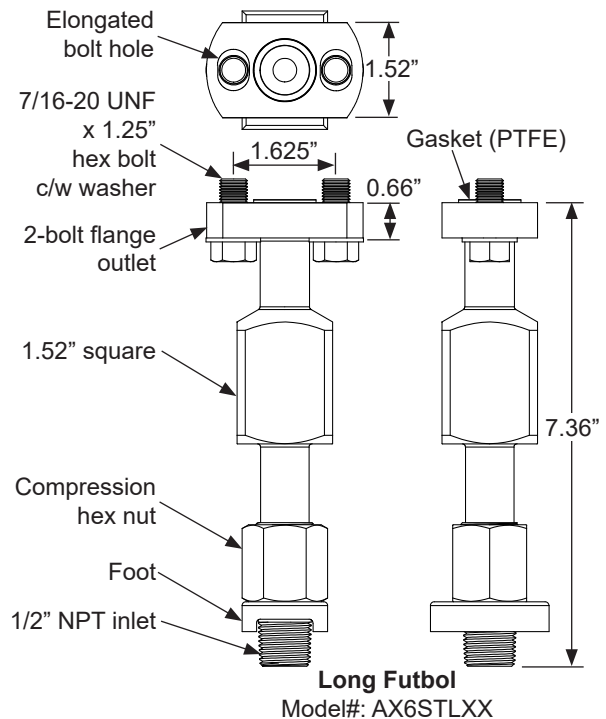
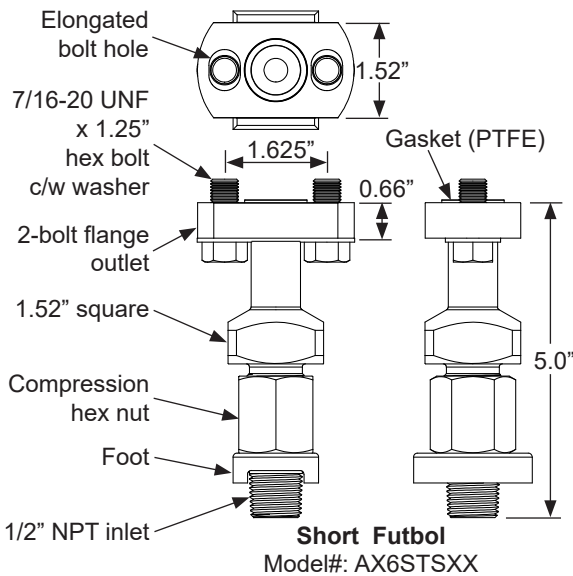
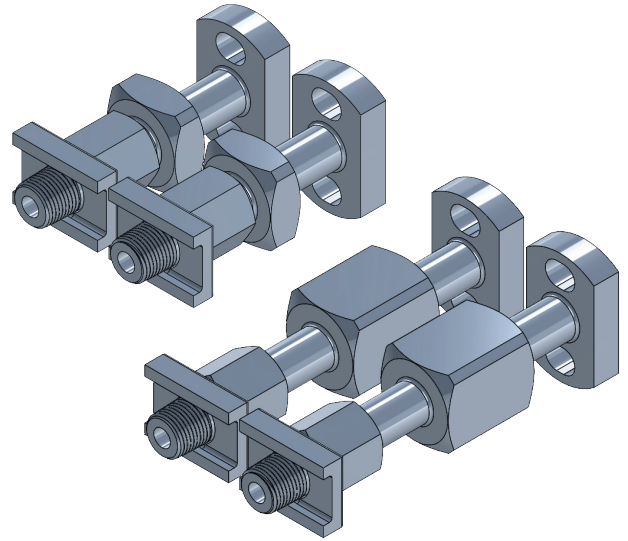
**International  
 IBC Body Certification  
 ISO 9001:2015**



# AX6ST STABILIZED FUTBOLS

## 3/8" Orifice Stabilized Futbols

The AX6ST Stabilized Futbols are designed to safely allow directly connecting the manifold and adaptor pieces to the EFM device. They are designed to safely accommodate up to 150 ft/lb load. The nut and foot tighten down against the meter run to take the radial forces away from the NPT connections and to the feet of the stabilizers. The elongated bolt holes accommodate 2.125" to 2.250" spacing between centers on the impulse connections. Optional dielectric gasket kits provide a non-conductive barrier between the meter run and the EFM.



**MANUFACTURING EXCELLENCE  
IN GAS AND PETROCHEMICAL MEASUREMENT**

**RJ MACHINE CO.**



**International  
IBC Body Certification**

**ISO 9001:2015**



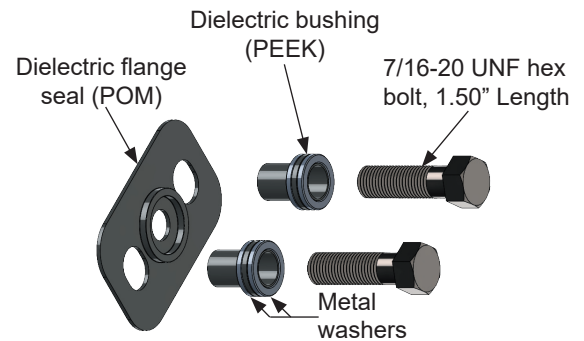
# AX6ST STABILIZED FUTBOLS

## Product Numbering and Contact Information

Product Numbering									
Brand	Orifice	Type	Length	Inlet Size	Inlet Type	Outlet Size	Outlet Type	Material	Option
AX	6 3/8"	ST Stabilized Futbol	S Short 5" OAL	(empty for 1/2" male NPT)	(empty for 1/2" male NPT)	(empty for 2-bolt flange)	(empty for 2-bolt flange)	SS ASTM A182 Gr. 316	DI (SS) Dielectrics w/1.5" 304SS bolt
			L Long 7.36" OAL						DI (CS) Dielectrics w/1.5" CS bolt
									DI-S6 Dielectrics w/1.5" 316SS bolt
									S6 1.25" 316SS bolt
Example: model number <b>AX6STLSS</b> is interpreted as, Stabilized Futbol, Long configuration, 7.36" OAL, 3/8" orifice, 1/2" male NPT inlet, 2-bolt flange outlet, ASTM A182 Gr. 316 material for all pressure containing components.									OR FKM V1238-95 O-ring flange seal

Standard Compliances	
Standard	Description
ASME B31.1	Power Piping
ASME B31.3	Process Piping
ASME B16.34	Valves - Flanged, Thread, and Welding End
ISO 5208	Industrial valves - Pressure Testing of Metallic Valves
API 598	Valve Inspection and Testing
MSS SP-105	Instrument Valves for Code Application
MSS SP-25	Standard Marking Systems for Valves, Fittings, and Flanged Unions
IEC 61518	Mating dimensions between differential pressure (type) measuring instruments and flanged-on shut-off devices up to 413 bar (41,3 MPa)
ISO10474	Steel and Steel Products - Inspection Documents

### Dielectric Flange Seal and Bushing Option Code: - DI



### Contact information:

RJ Machine Co.  
 Corporate: 112 Northridge Road, Marble Falls, TX 78654  
 Office: 830.693.7493  
 Fax: 830.693.8614  
 Web: [www.rjmachineonline.com](http://www.rjmachineonline.com)  
 Order Online: [www.shoprjmachine.com](http://www.shoprjmachine.com)

### Representative/Distributor information:

The information contained herein is intended to be used as a guide to assist with product and service selection. While reasonable efforts have been made to ensure the accuracy and completeness of the content, RJ Machine Co. makes no representations as to the completeness or accuracy of the information contained herein. The customer is solely responsible for evaluating and selecting products and ensuring that all performance, safety and warning requirements are satisfied. RJ MACHINE CO. MAKES NO REPRESENTATIONS OR WARRANTIES, EITHER EXPRESS OR IMPLIED, INCLUDING WITHOUT LIMITATION ANY WARRANTIES OF MERCHANTABILITY OR FITNESS FOR A PARTICULAR PURPOSE WITH RESPECT TO THE INFORMATION SET FORTH HEREIN OR THE PRODUCT(S) TO WHICH THE INFORMATION REFERS. ACCORDINGLY, RJ MACHINE CO. SHALL NOT BE RESPONSIBLE FOR DAMAGES (OF ANY KIND OR NATURE, INCLUDING INCIDENTAL, INDIRECT, OR CONSEQUENTIAL DAMAGES) RESULTING FROM THE USE OF OR RELIANCE UPON THIS INFORMATION. Patents and Patents Pending in the U.S. and foreign countries. The products and specifications set forth in this brochure are subject to change without notice and RJ Machine Co. disclaims any and all liability for such changes. All third party trademarks including but not limited to logos, numbers and names referenced herein remain the property of their respective owners. Unless otherwise specifically identified as such, RJ Machine Co.'s use of third party trademarks does not indicate any relationship, sponsorship or endorsement between RJ Machine Co. and the owners of the trademarks. Any reference by RJ Machine Co. to third party trademarks is to identify the corresponding goods and shall be considered nominative fair use under applicable trademark law.  
 © 2023 by RJ Machine Co. All rights reserved. Material in this brochure or catalogue may not be reproduced in whole or in part, in any form, without written permission from the publisher.



**MANUFACTURING EXCELLENCE  
 IN GAS AND PETROCHEMICAL MEASUREMENT**

**RJ MACHINE CO.**

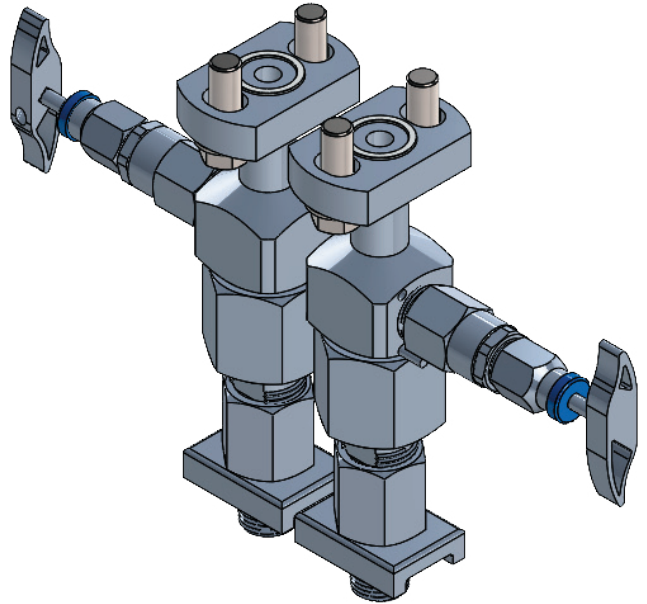




## AX6ST6S STABILIZED CONNECTORS 3/8" ORIFICE WITH INTEGRAL ISOLATE VALVE

### 3/8" Orifice Stabilized Connectors with Isolate Valve

The AX6ST6S provides a stabilized connector with integral block valve. The compression nut and foot take the radial forces off of the NPT threads and distribute the load along the foot to provide a more robust mounting solution. The unique union style allows for quicker and easier installation. Bolt holes are elongated to accommodate 2-1/8" to 2-1/4" centers. Dielectric Flange Seals and bushings are available as an option.



### Features and Benefits:

- ▶ 100% testing ensures seat and seal tightness.
- ▶ Two piece stem featuring non-rotating needle design prolongs seat and packing life to ensure bubble tight shut off.
- ▶ Near net shape forging provides for greater structural integrity of body.
- ▶ Packing below stem threads prevents corrosion.
- ▶ Stem threads formed by rolling provides improved strength and smooth operation.
- ▶ Body to bonnet seal in compression isolates bonnet threads from process fluid to prevent corrosion and tensile breakage.
- ▶ Dielectric isolation offering protects instrumentation from cathodic protection used in many natural gas applications.
- ▶ Bodies and bonnets are lot code stamped to provide full material traceability.
- ▶ 316SS manifold materials meet NACE MR0175 / ISO 15156
- ▶ 304SS bolts are provided as standard with 316 SS Stabilizers



MACHINE.CO.

**MANUFACTURING EXCELLENCE  
IN GAS AND PETROCHEMICAL MEASUREMENT**

**RJ MACHINE CO.**



International  
**IBC** Body Certification

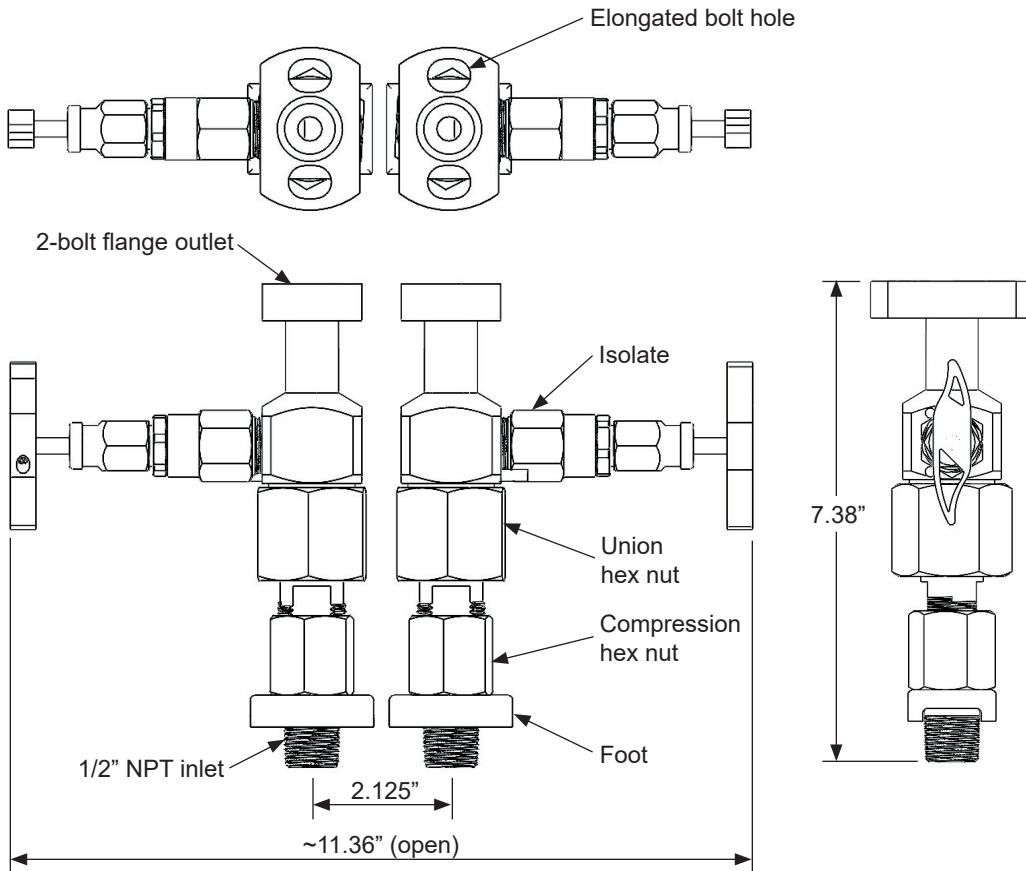
ISO 9001:2015



# AX6ST6S STABILIZED CONNECTORS 3/8" ORIFICE WITH INTEGRAL ISOLATE VALVE

## Technical Specification

### Normal Pair Installation Configuration



Specification	
Model	AX6ST6SXXXX
Orifice	3/8"
Rating	POM, PEEK seat: 6000 psi at 100°F 414 bar at 38°C ETFE seat: 2000 psi at 100°F 138 bar at 38°C
Seat	Soft seat, POM, ETFE, PEEK
Packing	O-ring, FEPM, or, FKM
Stem	Non-rotating
Inlet	1/2" female NPT
Outlet	2-bolt flange
Handle	Removable
Body	Forging
Weight	Single unit: 3 lb. 7 oz. (1.56 kg) Pair: 6 lb. 14 oz. (3.12 kg)

### Dielectric Flange Seal and Bushing Option

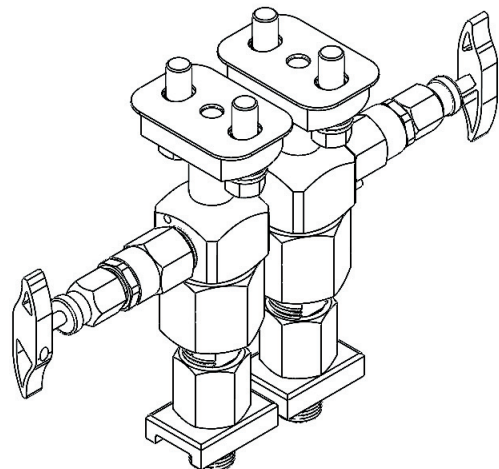
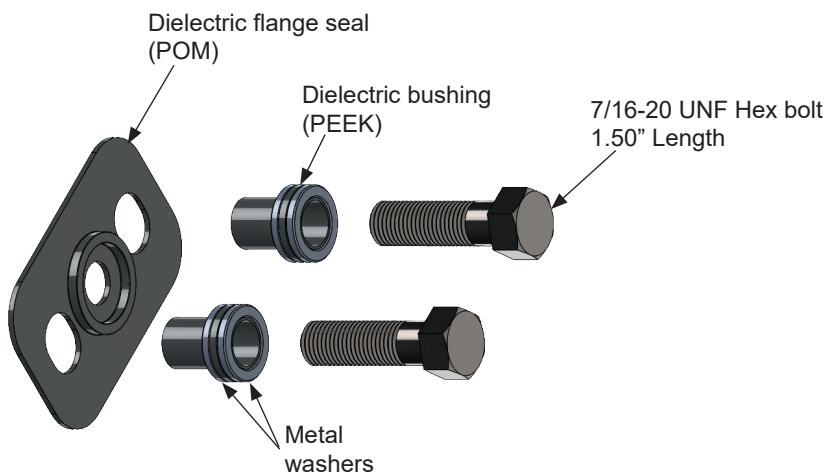


Diagram of Dielectric Kit, code - DI

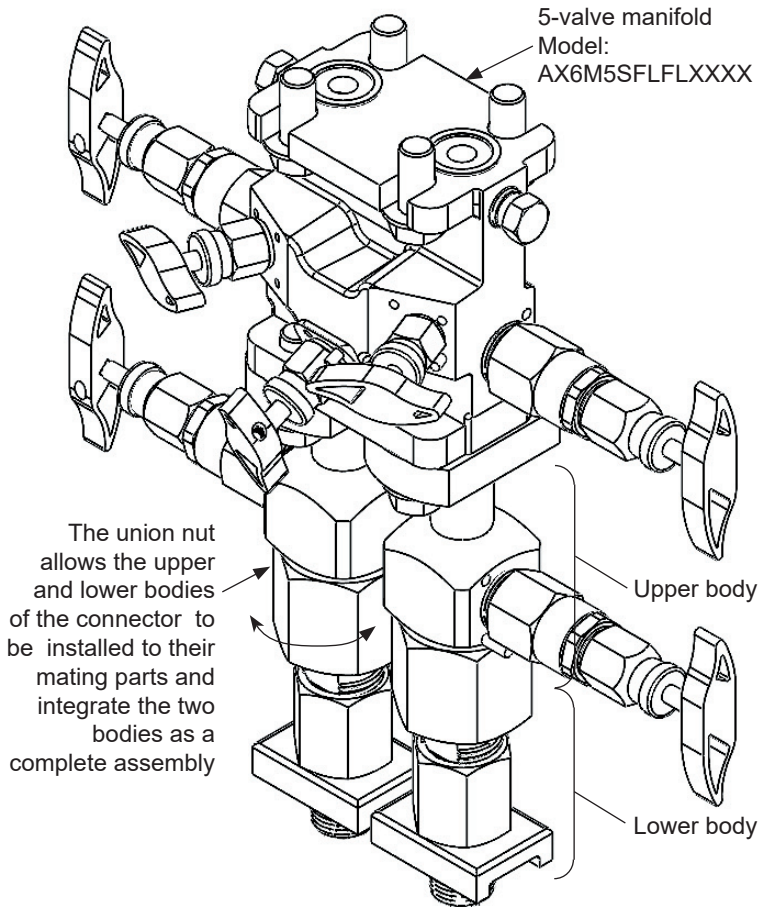




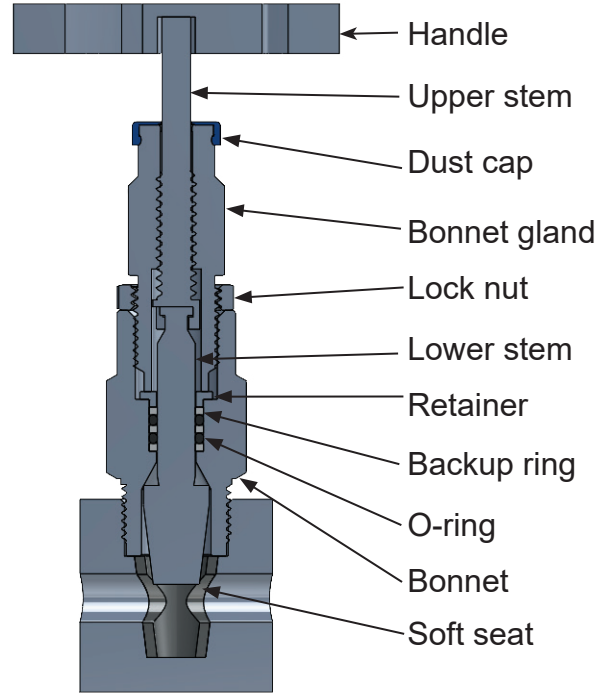
# AX6ST6S STABILIZED CONNECTORS 3/8" ORIFICE WITH INTEGRAL ISOLATE VALVE

## Valve Detail Information

### Union Connection Allow Easy Installation

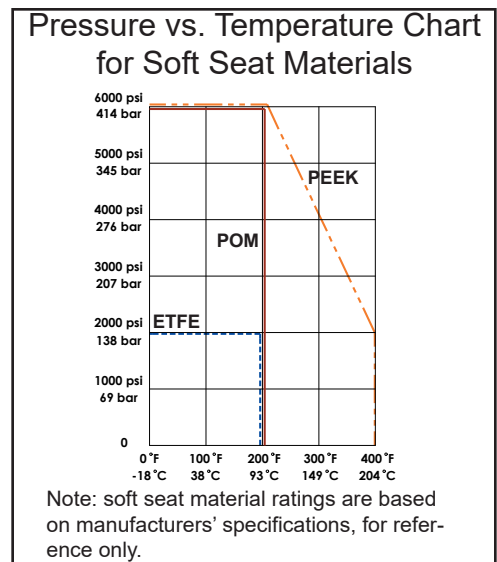


### Bonnet Details



Isolate Bonnet Configuration

Packing and Seat Temperature Rating				
Code	Component	Material	Minimum Temperature	Maximum Temperature
A	O-ring	FEPM	-4°F [-20°C]	400°F [204°C]
V	O-ring	FKM	-15°F [-26°C]	400°F [204°C]
D	Seat	POM	-40°F [-40°C]	200°F [93°C]
P	Seat	PEEK	-40°F [-40°C]	400°F [204°C]
Z	Seat	ETFE	-300°F [-185°C]	200°F [150°C]





# AX6ST6S STABILIZED CONNECTORS 3/8" ORIFICE WITH INTEGRAL ISOLATE VALVE

## Product Numbering and Contact Information

Product Numbering										
Brand	Orifice	Type	Inlet Size	Inlet Type	Outlet Size	Outlet Type	Material	Packing	Seat	Stem
AX	6 3/8"	ST6S stabilized connector	1/2" as stan- dard	male NPT as standard	(empty) for 2-bolt flange	(empty) for 2-bolt flange	SS ASTM A182 Gr. 316	A O-ring FEPM	D Soft seat POM	(empty) Non-rotating on Isolate valves as standard
							CS ASTM A105 (Zinc plated)	V O-ring FKM	P Soft seat PEEK	
								Z Soft seat ETFE		

Example: model number **AX6ST6SSSAD** is interpreted as,  
Stabilized connector, with isolate valve, 3/8" orifice, 1/2" male NPT inlet, 2-bolt flange outlet, ASTM A182 Gr. 316 material for all pressure containing components, FEPM O-ring packing, POM soft seat, non-rotating stem on isolate valves.

Options (to follow the product number above)	
Option	Description
DI (CS)	Dielectric flange seal, bolt bushing, w/1.50" CS bolt
DI (SS)	Dielectric flange seal, bolt bushing, w/1.50" SS bolts
TG	304 SS tag 32 characters limit laser marked
OR	O-ring flange seal

Standard Compliances	
Standard	Description
ASME B31.1	Power Piping
ASME B31.3	Process Piping
ASME B16.34	Valves - Flanged, Thread, and Welding End
ISO 5208	Industrial valves - Pressure testing of metallic valves
API 598	Valve Inspection and Testing
MSS SP-105	Instrument Valves for Code Application
MSS SP-25	Standard Marking Systems for Valves, Fittings, and Flanged Unions
IEC 61518	Mating dimensions between differential pressure (type) measuring instruments and flanged-on shut-off devices up to 413 bar (41,3 MPa)
ISO10474	Steel and steel products - Inspection documents

### Contact information:

RJ Machine Co.  
Corporate: 112 Northridge Road, Marble Falls, TX 78654  
Office: 830.693.7493  
Fax: 830.693.8614  
Web: [www.rjmachineonline.com](http://www.rjmachineonline.com)  
Order Online: [www.shoprjmachine.com](http://www.shoprjmachine.com)

### Representative/Distributor information:

The information contained herein is intended to be used as a guide to assist with product and service selection. While reasonable efforts have been made to ensure the accuracy and completeness of the content, RJ Machine Co. makes no representations as to the completeness or accuracy of the information contained herein. The customer is solely responsible for evaluating and selecting products and ensuring that all performance, safety and warning requirements are satisfied. RJ MACHINE CO. MAKES NO REPRESENTATIONS OR WARRANTIES, EITHER EXPRESS OR IMPLIED, INCLUDING WITHOUT LIMITATION ANY WARRANTIES OF MERCHANTABILITY OR FITNESS FOR A PARTICULAR PURPOSE WITH RESPECT TO THE INFORMATION SET FORTH HEREIN OR THE PRODUCT(S) TO WHICH THE INFORMATION REFERS. ACCORDINGLY, RJ MACHINE CO. SHALL NOT BE RESPONSIBLE FOR DAMAGES (OF ANY KIND OR NATURE, INCLUDING INCIDENTAL, INDIRECT, OR CONSEQUENTIAL DAMAGES) RESULTING FROM THE USE OF OR RELIANCE UPON THIS INFORMATION. Patents and Patents Pending in the U.S. and foreign countries. The products and specifications set forth in this brochure are subject to change without notice and RJ Machine Co. disclaims any and all liability for such changes. All third party trademarks including but not limited to logos, numbers and names referenced herein remain the property of their respective owners. Unless otherwise specifically identified as such, RJ Machine Co.'s use of third party trademarks does not indicate any relationship, sponsorship or endorsement between RJ Machine Co. and the owners of the trademarks. Any reference by RJ Machine Co. to third party trademarks is to identify the corresponding goods and shall be considered nominative fair use under applicable trademark law.  
© 2023 by RJ Machine Co. All rights reserved. Material in this brochure or catalogue may not be reproduced in whole or in part, in any form, without written permission from the publisher.



**MANUFACTURING EXCELLENCE  
IN GAS AND PETROCHEMICAL MEASUREMENT**

**RJ MACHINE CO.**

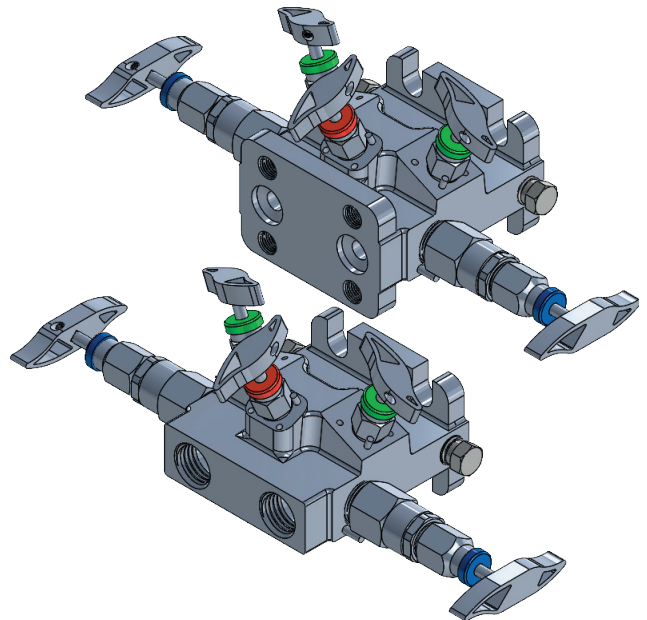




# AX6M5S & AX6MA5S 3/8" ORIFICE 5-VALVE GAS MANIFOLD

## 3/8" Orifice 5-Valve Gas Manifold

The AX6M(A)5S manifold features two isolate valves, two equalizer valves and one vent valve. The manifold features angled equalizer and vent valves for pinch free operation. Additional features include near to shape forged body, two piece stem, non-rotating needle and stem seals engineered to provide a bubble tight seal.



### Features and Benefits:

- ▶ 100% testing ensures blow out proof stem and seat tightness.
- ▶ Angled equalizer and vent valves provide ergonomic operation and eliminate pinch points.
- ▶ Self draining design with vent valve below equalizer prevents moisture trap in crossover pathways.
- ▶ Two piece stem and non-rotating needle design prolongs seat and packing life to ensure bubble tight shut off.
- ▶ Near net shape forging provides for greater structural integrity of body and minimizes material waste.
- ▶ Packing below stem threads prevents corrosion.
- ▶ Stem threads formed by rolling provides improved strength and smooth operation.
- ▶ Body to bonnet seal in compression isolates bonnet threads from process fluid to prevent corrosion and tensile breakage.
- ▶ 90° valve features drain and rod out ports to alleviate liquid and solid build up associated with horizontal to vertical applications.
- ▶ Dielectric isolation offering protects instrumentation from cathodic protection used in many natural gas applications.
- ▶ Bodies and bonnets are lot code stamped to provide full material traceability.



MACHINE.CO.

**MANUFACTURING EXCELLENCE  
IN GAS AND PETROCHEMICAL MEASUREMENT**

**RJ MACHINE CO.**



International  
IBC Body Certification

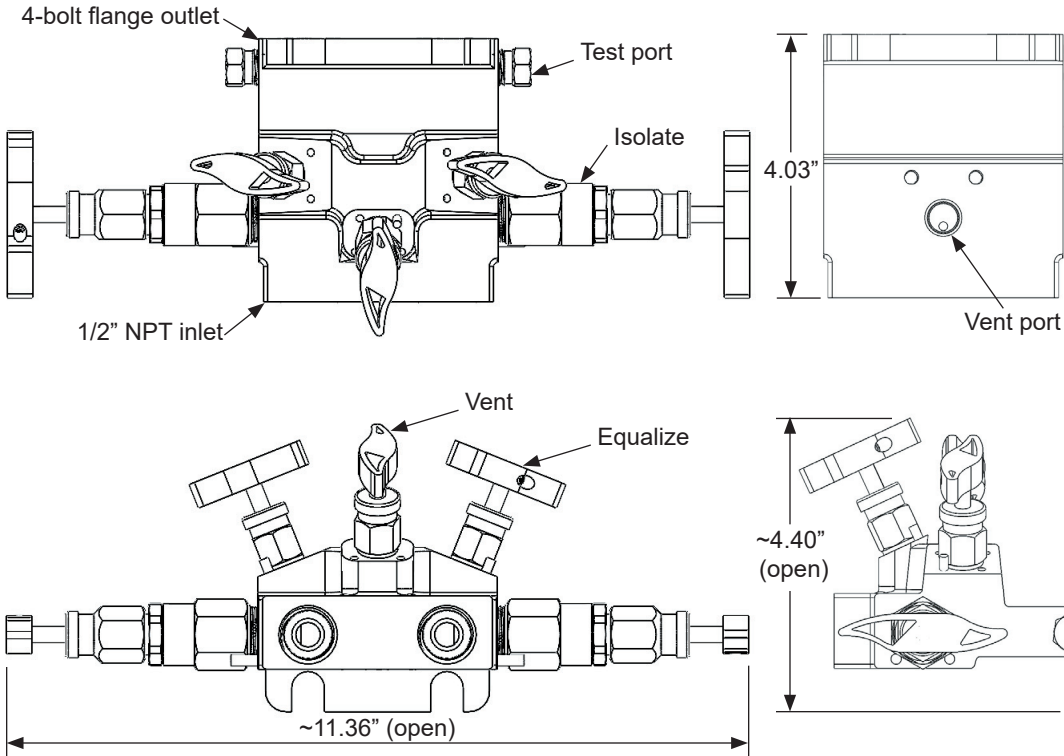
ISO 9001:2015



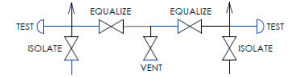
# AX6M5S & AX6MA5S 3/8" ORIFICE 5-VALVE GAS MANIFOLD

## Technical Specification

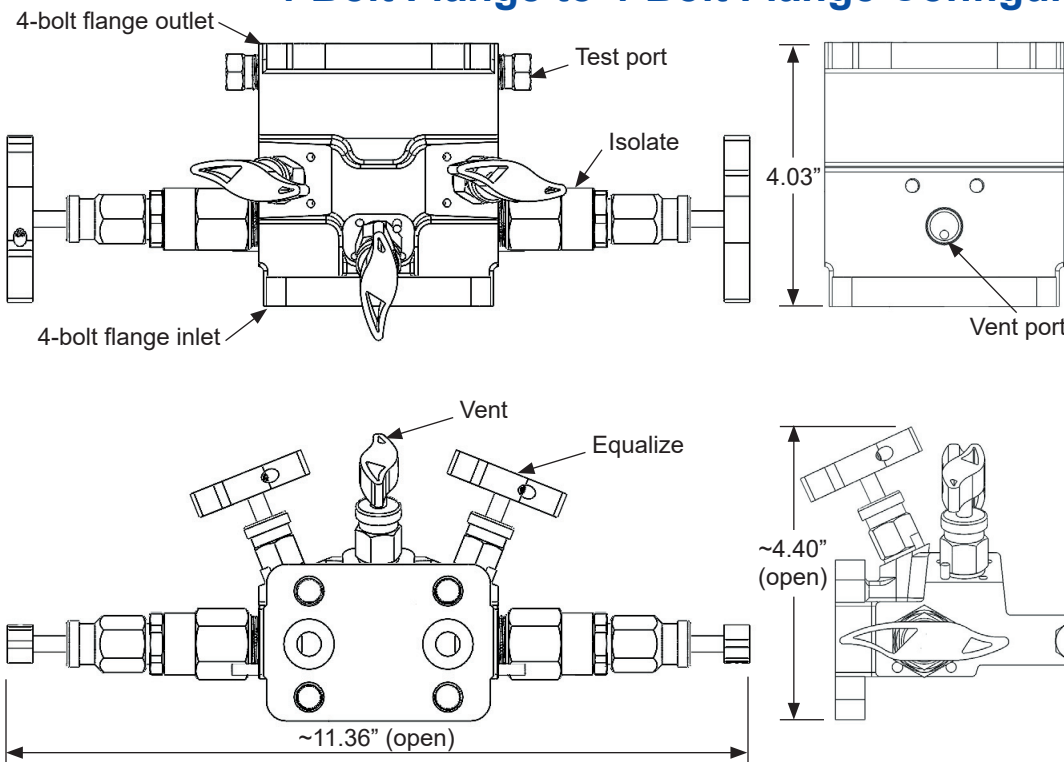
### Pipe to 4-Bolt Flange Configuration



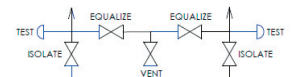
Specification	
Model	AX6M5SPFLXXXX
Orifice	3/8"
Rating	POM, PEEK seat: 6000 psi at 100°F 414 bar at 38°C ETFE seat: 2000 psi at 100°F 138 bar at 38°C
Seat	Soft seat, POM, ETFE, PEEK
Packing	O-ring, FEPM, or, FKM
Stem	Non-rotating, rotating
Inlet	1/2" female NPT
Outlet	4-bolt flange
Handle	Removable
Body	Forging
Weight	6 lb. 3.8 oz. (2.83 kg)



### 4-Bolt Flange to 4-Bolt Flange Configuration



Specification	
Model	AX6M5SFLFLXXXX
Orifice	3/8"
Rating	POM, PEEK seat: 6000 psi at 100°F 414 bar at 38°C ETFE seat: 2000 psi at 100°F 138 bar at 38°C
Seat	Soft seat, POM, ETFE, PEEK
Packing	O-ring, FEPM, or, FKM
Stem	Non-rotating, rotating
Inlet	4-bolt flange
Outlet	4-bolt flange
Handle	Removable
Body	Forging
Weight	6 lb. 11 oz. (3.03 kg)

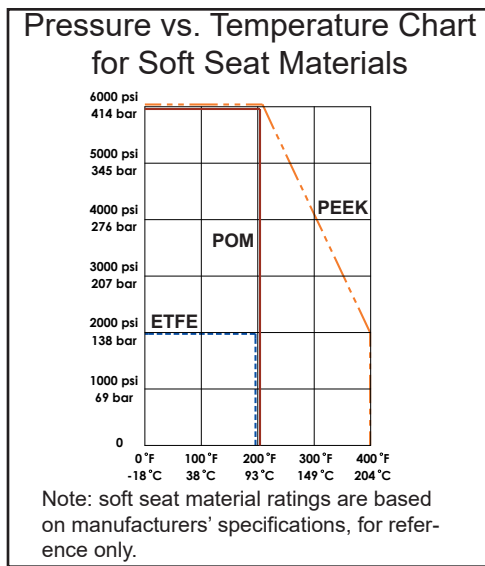
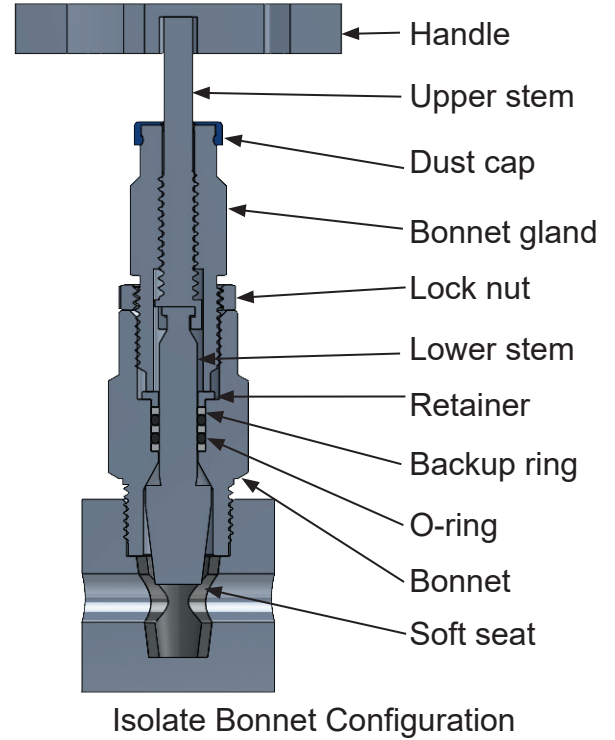
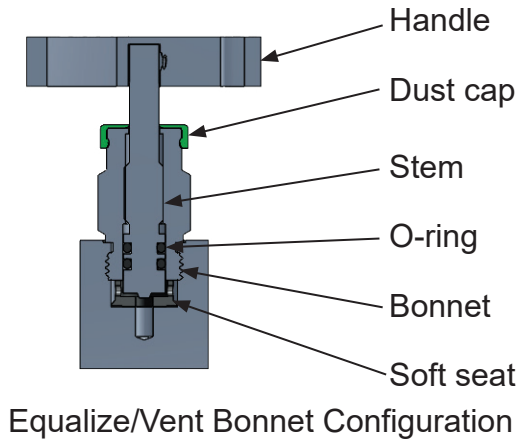




# AX6M5S & AX6MA5S 3/8" ORIFICE 5-VALVE GAS MANIFOLD

## Valve Detail Information

### Bonnet Details



Packing and Seat Temperature Rating				
Code	Component	Material	Minimum Temperature	Maximum Temperature
A	O-ring	FEPM	-4°F [-20°C]	400°F [204°C]
V	O-ring	FKM	-15°F [-26°C]	400°F [204°C]
D	Seat	POM	-40°F [-40°C]	200°F [93°C]
P	Seat	PEEK	-40°F [-40°C]	400°F [204°C]
Z	Seat	ETFE	-300°F [-185°C]	200°F [93°C]

Standard Compliances	
Standard	Description
ASME B31.1	Power Piping
ASME B31.3	Process Piping
ASME B16.34	Valves - Flanged, Thread, and Welding End
ISO 5208	Industrial valves - Pressure testing of metallic valves
API 598	Valve Inspection and Testing
MSS SP-105	Instrument Valves for Code Application
MSS SP-25	Standard Marking Systems for Valves, Fittings, and Flanged Unions
IEC 61518	Mating dimensions between differential pressure (type) measuring instruments and flanged-on shut-off devices up to 413 bar (41,3 MPa)
ISO10474	Steel and steel products - Inspection documents



# AX6M5S & AX6MA5S 3/8" ORIFICE 5-VALVE GAS MANIFOLD

## Product Numbering and Contact Information

### Product Numbering

Brand	Orifice	Type	Inlet Size	Inlet Type	Outlet Size	Outlet Type	Material	Packing	Seat	Stem
<b>AX</b>	<b>6</b> 3/8"	<b>M5S</b> regular manifold	(empty) 1/2" female NPT as standard	<b>P</b> female NPT pipe thread	(empty) 1/2" female NPT as standard	<b>P</b> female NPT pipe thread	<b>SS</b> ASTM A182 Gr. 316	<b>A</b> O-ring FEPM	<b>D</b> Soft seat POM	(empty) Non-rotating on isolate valves, rotating stem on equalize and vent valves as standard
		<b>MA5S</b> 90° Angle manifold	(empty for 4-bolt flange)	<b>FL</b> 4-bolt flange	(empty for 4-bolt flange)	<b>FL</b> 4-bolt flange	<b>CS</b> ASTM A105 (Zinc plated)	<b>V</b> O-ring FKM	<b>P</b> Soft seat PEEK	
					(empty for 4-bolt Coplanar flange)	<b>CP</b> 4-bolt Coplanar flange			<b>Z</b> Soft seat ETFE	

Example: model number **AX6M5SPFLSSAD** is interpreted as,  
Gas manifold, 5-valve, 3/8" orifice, 1/2" female NPT inlet, 4-bolt flange outlet, ASTM A182 Gr. 316 material for all pressure containing components, FEPM O-ring packing, POM soft seat, non-rotating stem on isolate valves, rotating stems on equalize and vent valves.

### Bolting Options

(to follow the product number above)

Application	Description	Bolt Option		
		Length	Carbon Steel	Gr. 304
Delta Pressure Transmitter	Bi-planar connection: Rosemount™ 1151, Honeywell™ 900, etc.	1"	empty, standard for CS manifolds	empty, standard for SS manifolds
	Coplanar connection: Rosemount™ 2024, 3051, 3095, etc.	2-1/2"		
Flow Computer	ABB Total Flow, Thermo Fisher™ (with Honeywell™ transducer module), Barton Scanner, Bristol TeleFlow & TeleTrans	1"		
	Fisher™, Flow Automation™ (with Rosemount™ transducer module), Daniel, Dynamic Fluid, etc.	2-1/2"		
Delta Pressure Transmitter with DP to GP Adapter	DP Bi-planar connection used in combination with DP to GP adapter (model number: AX6DGP6SFLFLXX)	2"	-200CS	-200SS
	DP Coplanar connection used in combination with DP to GP adapter (model number: AX6DGP6SFLFLXX)	3-1/4"	-325CS	-325SS

### Contact information:

RJ Machine Co.  
Corporate: 112 Northridge Road, Marble Falls, TX 78654  
Office: 830.693.7493  
Fax: 830.693.8614  
Web: [www.rjmachineonline.com](http://www.rjmachineonline.com)  
Order Online: [www.shoprjmachine.com](http://www.shoprjmachine.com)

### Representative/Distributor information:

The information contained herein is intended to be used as a guide to assist with product and service selection. While reasonable efforts have been made to ensure the accuracy and completeness of the content, RJ Machine Co. makes no representations as to the completeness or accuracy of the information contained herein. The customer is solely responsible for evaluating and selecting products and ensuring that all performance, safety and warning requirements are satisfied. RJ MACHINE CO. MAKES NO REPRESENTATIONS OR WARRANTIES, EITHER EXPRESS OR IMPLIED, INCLUDING WITHOUT LIMITATION ANY WARRANTIES OF MERCHANTABILITY OR FITNESS FOR A PARTICULAR PURPOSE WITH RESPECT TO THE INFORMATION SET FORTH HEREIN OR THE PRODUCT(S) TO WHICH THE INFORMATION REFERS. ACCORDINGLY, RJ MACHINE CO. SHALL NOT BE RESPONSIBLE FOR DAMAGES (OF ANY KIND OR NATURE, INCLUDING INCIDENTAL, INDIRECT, OR CONSEQUENTIAL DAMAGES) RESULTING FROM THE USE OF OR RELIANCE UPON THIS INFORMATION. Patents and Patents Pending in the U.S. and foreign countries. The products and specifications set forth in this brochure are subject to change without notice and RJ Machine Co. disclaims any and all liability for such changes. All third party trademarks including but not limited to logos, numbers and names referenced herein remain the property of their respective owners. Unless otherwise specifically identified as such, RJ Machine Co.'s use of third party trademarks does not indicate any relationship, sponsorship or endorsement between RJ Machine Co. and the owners of the trademarks. Any reference by RJ Machine Co. to third party trademarks is to identify the corresponding goods and shall be considered nominative fair use under applicable trademark law.  
© 2023 by RJ Machine Co. All rights reserved. Material in this brochure or catalogue may not be reproduced in whole or in part, in any form, without written permission from the publisher.



MACHINE.CO.

**MANUFACTURING EXCELLENCE  
IN GAS AND PETROCHEMICAL MEASUREMENT**

**RJ MACHINE CO.**



**International  
IBC Body Certification**

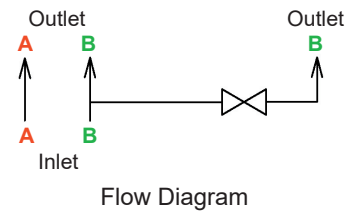
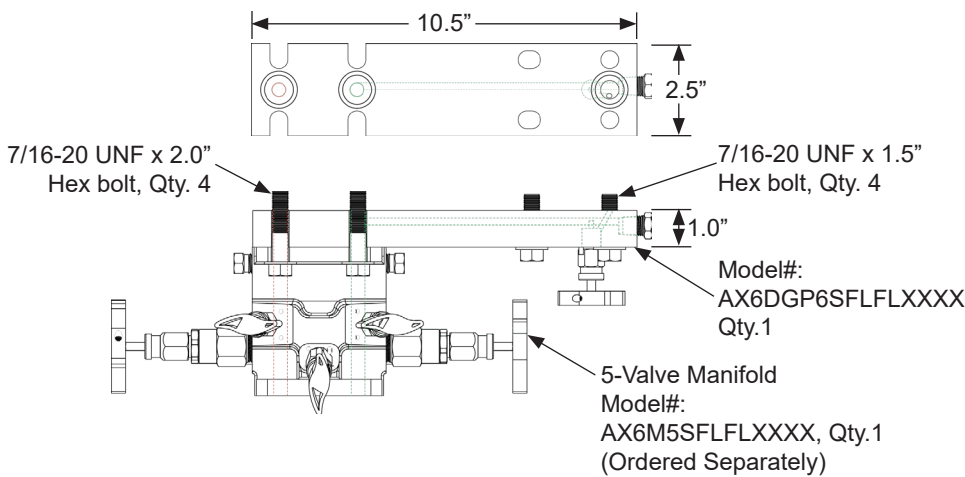
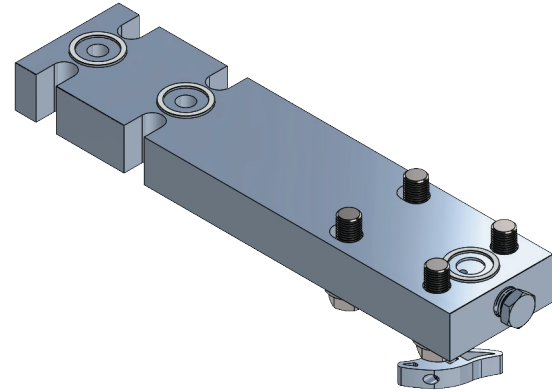
**ISO 9001:2015**



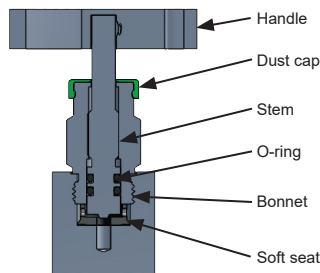
# AX6DGP DP TO GP ADAPTER

## DP to GP Adapter

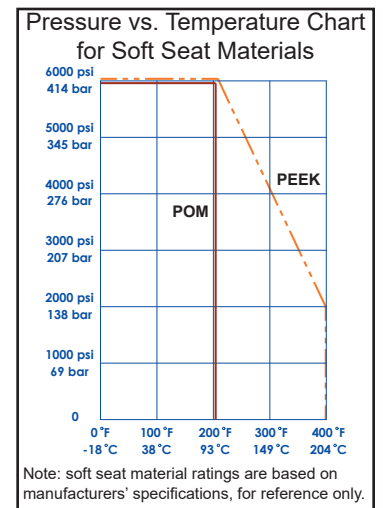
The AX6DGP is a Differential Pressure (DP) to Gauge Pressure (GP) adapter design that allows both your DP and GP Transmitters to be installed on a single set of instrument taps. This adapter features a 3/8" orifice design for the DP Transmitter. It also incorporates a block valve to isolate the GP from the DP transmitter as well as 1/4" calibration port for the GP transmitter.



Specification	
Model	AX6DGP6SFLFLXXXX
Bore Size	3/8"
Rating	Up to 6000 psi at 100°F 414 bar at 38°C (depends on the soft seat, refer to the P vs. T chart on the right side)
Inlet	4-bolt flange
Outlet	4-bolt flange
Body	Forging
Weight	~6.7 lbs (3.04 kg)



Bonnet Configuration



**MANUFACTURING EXCELLENCE  
IN GAS AND PETROCHEMICAL MEASUREMENT**

**RJ MACHINE CO.**





# AX6DGP DP TO GP ADAPTER

## Product Numbering and Contact Information

Product Numbering							
Brand	Orifice	Type	Inlet Type	Outlet Type	Material	Packing	Seat
<b>AX</b>	<b>6</b> 3/8"	<b>DGP6S</b> DP to GP Adapter	<b>FL</b> 4-bolt flange	<b>FL</b> 4-bolt flange	<b>SS</b> ASTM A182 Gr. 316	<b>A</b> O-ring FEPM	<b>D</b> Soft seat POM
					<b>CS</b> ASTM A105 (Zinc plated)	<b>V</b> O-ring FKM	<b>P</b> Soft seat PEEK

Example: model number **AX6DGP6SFLFLSSAD** is interpreted as, DP to GP adapter, 3/8" orifice, 4-bolt flange inlet, 4-bolt flange outlet, ASTM A182 Gr. 316 material for all pressure containing components, with isolate valve, FEPM O-ring packing, POM soft seat.

Option	
Code	Description
OR	O-Ring flange seal
S6	1.5" 316SS bolt
B7	ASTM A193 B7, QT
B8C1	Class 1, 304, ST
B8MC1	Class 1, 316, ST
B8C2	Class 2, 304, ST, SH
B8MC2	Class 2, 316, ST, SH

**Bolting note:**  
 1. B7, B8C1, B8MC1, B8C2, B8MC2 are core grades and comply with ASTM A193  
 2. QT=Quenched and Tempered  
 ST=Carbide Solution Treated  
 SH=Strain Hardened  
 3. To order code grade bolting, for example, 175B7 is interpreted as 1.75" length and ASTM A193 B7 grade bolt.

Bolt Code Options	
Delta Pressure Side	Gauge Pressure Side
Blank= 2" bolts	Blank= 1.5" bolts
350XX= 3.5" bolts with washers XX= material code (CS, SS, S6) for use with coplanar transmitters	275XX= 2.75" bolts with washers XX= material code (CS, SS, S6) for use with coplanar transmitters

Packing and Seat Temperature Rating				
Code	Component	Material	Min. Temp.	Max. Temp.
A	O-ring	FEPM	-4°F [-20°C]	400°F [204°C]
V	O-ring	FKM	-15°F [-26°C]	400°F [204°C]
D	Seat	POM	-40°F [-40°C]	200°F [93°C]
P	Seat	PEEK	-40°F [-40°C]	400°F [204°C]

Standard Compliances	
Standard	Description
ASME B31.1	Power Piping
ASME B31.3	Process Piping
ASME B16.34	Valves - Flanged, Thread, and Welding End
ISO 5208	Industrial valves - Pressure testing of metallic valves
API 598	Valve Inspection and Testing
MSS SP-105	Instrument Valves for Code Application
MSS SP-25	Standard Marking Systems for Valves, Fittings, and Flanged Unions
IEC 61518	Mating dimensions between differential pressure (type) measuring instruments and flanged-on shut-off devices up to 413 bar (41,3 MPa)
ISO10474	Steel and steel products - Inspection documents

### Contact information:

RJ Machine Co.  
 Corporate: 112 Northridge Road, Marble Falls, TX 78654  
 Office: 830.693.7493  
 Fax: 830.693.8614  
 Web: [www.rjmachineonline.com](http://www.rjmachineonline.com)  
 Order Online: [www.shoprjmachine.com](http://www.shoprjmachine.com)

### Representative/Distributor information:

The information contained herein is intended to be used as a guide to assist with product and service selection. While reasonable efforts have been made to ensure the accuracy and completeness of the content, RJ Machine Co. makes no representations as to the completeness or accuracy of the information contained herein. The customer is solely responsible for evaluating and selecting products and ensuring that all performance, safety and warning requirements are satisfied. RJ MACHINE CO. MAKES NO REPRESENTATIONS OR WARRANTIES, EITHER EXPRESS OR IMPLIED, INCLUDING WITHOUT LIMITATION ANY WARRANTIES OF MERCHANTABILITY OR FITNESS FOR A PARTICULAR PURPOSE WITH RESPECT TO THE INFORMATION SET FORTH HEREIN OR THE PRODUCT(S) TO WHICH THE INFORMATION REFERS. ACCORDINGLY, RJ MACHINE CO. SHALL NOT BE RESPONSIBLE FOR DAMAGES (OF ANY KIND OR NATURE, INCLUDING INCIDENTAL, INDIRECT, OR CONSEQUENTIAL DAMAGES) RESULTING FROM THE USE OF OR RELIANCE UPON THIS INFORMATION. Patents and Patents Pending in the U.S. and foreign countries. The products and specifications set forth in this brochure are subject to change without notice and RJ Machine Co. disclaims any and all liability for such changes. All third party trademarks including but not limited to logos, numbers and names referenced herein remain the property of their respective owners. Unless otherwise specifically identified as such, RJ Machine Co.'s use of third party trademarks does not indicate any relationship, sponsorship or endorsement between RJ Machine Co. and the owners of the trademarks. Any reference by RJ Machine Co. to third party trademarks is to identify the corresponding goods and shall be considered nominative fair use under applicable trademark law.  
 © 2023 by RJ Machine Co. All rights reserved. Material in this brochure or catalogue may not be reproduced in whole or in part, in any form, without written permission from the publisher.



MACHINE.CO.

**MANUFACTURING EXCELLENCE  
 IN GAS AND PETROCHEMICAL MEASUREMENT**

**RJ MACHINE CO.**



**International  
 IBC Body Certification  
 ISO 9001:2015**

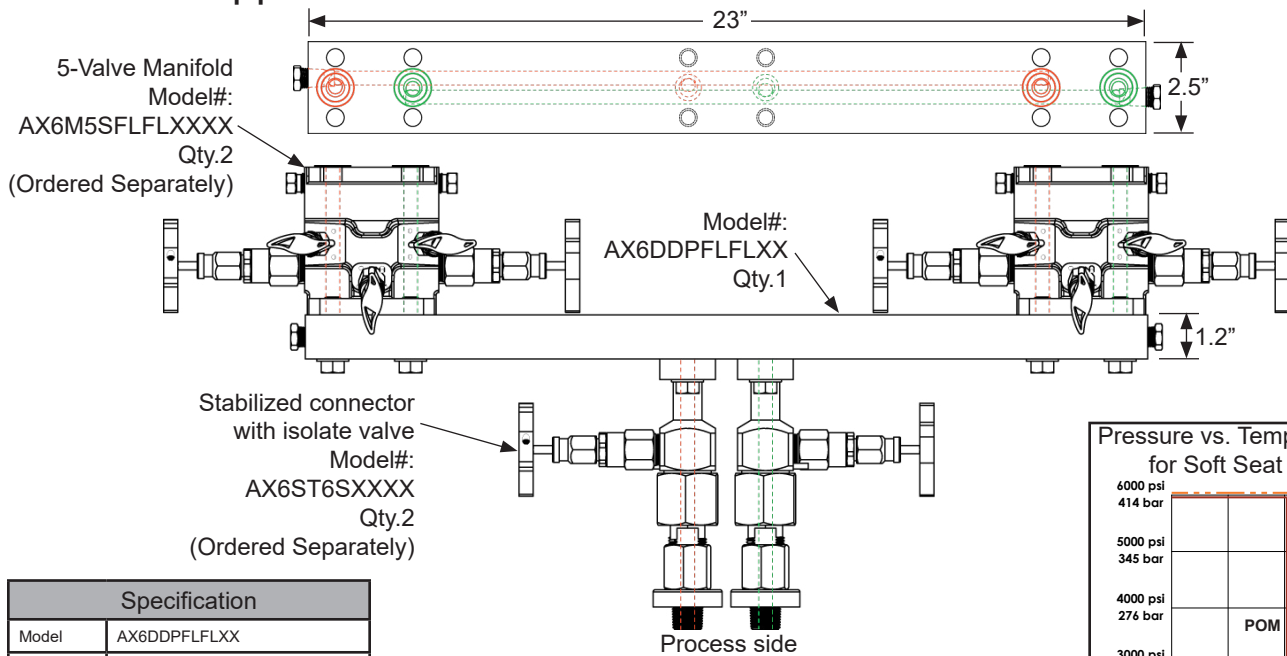
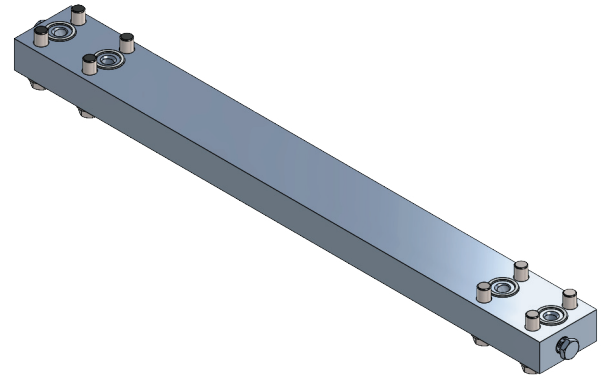




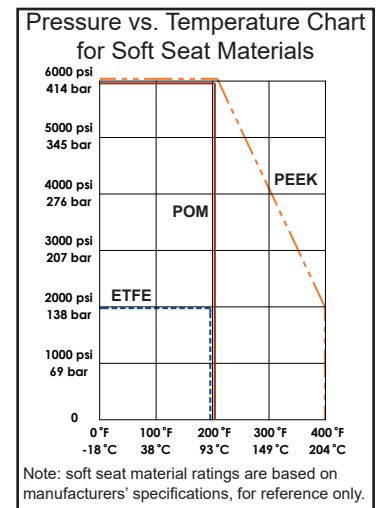
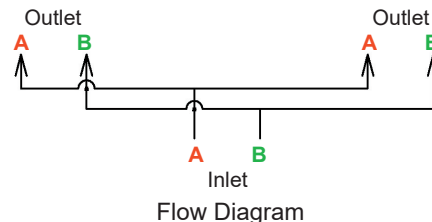
# AX6DDP DUAL DELTA P ADAPTER

## 3/8" Orifice Dual Delta P Adapter

The AX6DDP is designed to allow two Different Pressure Transmitters off a single set of orifice taps. It features a 3/8" orifice throughout and is 23" long to accommodate large Electronic Flow Measurement (EFM) devices. This adapter can be used for both custody transfer applications and bidirectional flow applications.



Specification	
Model	AX6DDPFLFLXX
Bore Size	3/8"
Rating	Up to 6000 psi at 100°F 414 bar at 38°C (depends on manifold soft seat, refer to the P vs. T chart on the right side)
Inlet	4-bolt flange
Outlet	4-bolt flange
Body	Forging
Weight	~18 lbs (8.2 kg)



MACHINE.CO.

**MANUFACTURING EXCELLENCE  
IN GAS AND PETROCHEMICAL MEASUREMENT**

**RJ MACHINE CO.**



**International  
IBC Body Certification**

**ISO 9001:2015**



# AX6DDP DUAL DELTA P ADAPTER

## Product Numbering and Contact Information

Product Numbering								Option	
Brand	Orifice	Type	Inlet Size	Inlet Type	Outlet Size	Outlet Type	Material	Code	Description
<b>AX</b>	<b>6</b> 3/8"	<b>DDP</b> Dual Delta P Adapter	(empty for 4-bolt flange)	<b>FL</b> 4-bolt flange	(empty for 4-bolt flange)	<b>FL</b> 4-bolt flange	<b>SS</b> ASTM A182 Gr. 316	OR	O-Ring flange seal
							<b>CS</b> ASTM A105 (Zinc plated)	S6	1.75" 316SS bolt
Example: model number <b>AX6DDPFLSS</b> is interpreted as, Dual delta P adapter, 3/8" orifice, 4-bolt flange inlet, 4-bolt flange outlet, ASTM A182 Gr. 316 material for all pressure containing components.								B7	ASTM A193 B7, QT
								B8C1	Class 1, 304, ST
								B8MC1	Class 1, 316, ST
								B8C2	Class 2, 304, ST, SH
								B8MC2	Class 2, 316, ST, SH
								Bolting note: 1. B7, B8C1, B8MC1, B8C2, B8MC2 are code grades and comply with ASTM A193 2. QT=Quenched and Tempered ST=Carbide Solution Treated SH=Strain Hardened 3. To order code grade bolting, for example, 175B7 is interpreted as 1.75" length and ASTM A193 B7 grade bolt.	

Standard Compliances	
Standard	Description
ASME B31.1	Power Piping
ASME B31.3	Process Piping
ASME B16.34	Valves - Flanged, Thread, and Welding End
ISO 5208	Industrial valves - Pressure testing of metallic valves
API 598	Valve Inspection and Testing
MSS SP-105	Instrument Valves for Code Application
MSS SP-25	Standard Marking Systems for Valves, Fittings, and Flanged Unions
IEC 61518	Mating dimensions between differential pressure (type) measuring instruments and flanged-on shut-off devices up to 413 bar (41,3 MPa)
ISO10474	Steel and steel products - Inspection documents

Packing and Seat Temperature Rating				
Code	Component	Material	Min. Temp.	Max. Temp.
A	O-ring	FEPM	-4°F [-20°C]	400°F [204°C]
V	O-ring	FKM	-15°F [-26°C]	400°F [204°C]
D	Seat	POM	-40°F [-40°C]	200°F [93°C]
P	Seat	PEEK	-40°F [-40°C]	400°F [204°C]
Z	Seat	ETFE	-300°F [-185°C]	200°F [93°C]
Note: this table is referenced for the relating manifolds and stabilized connectors, not for the AX6DDP adapter.				

### Contact information:

RJ Machine Co.  
 Corporate: 112 Northridge Road, Marble Falls, TX 78654  
 Office: 830.693.7493  
 Fax: 830.693.8614  
 Web: [www.rjmachineonline.com](http://www.rjmachineonline.com)  
 Order Online: [www.shoprjmachine.com](http://www.shoprjmachine.com)

### Representative/Distributor information:

The information contained herein is intended to be used as a guide to assist with product and service selection. While reasonable efforts have been made to ensure the accuracy and completeness of the content, RJ Machine Co. makes no representations as to the completeness or accuracy of the information contained herein. The customer is solely responsible for evaluating and selecting products and ensuring that all performance, safety and warning requirements are satisfied. RJ MACHINE CO. MAKES NO REPRESENTATIONS OR WARRANTIES, EITHER EXPRESS OR IMPLIED, INCLUDING WITHOUT LIMITATION ANY WARRANTIES OF MERCHANTABILITY OR FITNESS FOR A PARTICULAR PURPOSE WITH RESPECT TO THE INFORMATION SET FORTH HEREIN OR THE PRODUCT(S) TO WHICH THE INFORMATION REFERS. ACCORDINGLY, RJ MACHINE CO. SHALL NOT BE RESPONSIBLE FOR DAMAGES (OF ANY KIND OR NATURE, INCLUDING INCIDENTAL, INDIRECT, OR CONSEQUENTIAL DAMAGES) RESULTING FROM THE USE OF OR RELIANCE UPON THIS INFORMATION. Patents and Patents Pending in the U.S. and foreign countries. The products and specifications set forth in this brochure are subject to change without notice and RJ Machine Co. disclaims any and all liability for such changes. All third party trademarks including but not limited to logos, numbers and names referenced herein remain the property of their respective owners. Unless otherwise specifically identified as such, RJ Machine Co.'s use of third party trademarks does not indicate any relationship, sponsorship or endorsement between RJ Machine Co. and the owners of the trademarks. Any reference by RJ Machine Co. to third party trademarks is to identify the corresponding goods and shall be considered nominative fair use under applicable trademark law.  
 © 2023 by RJ Machine Co. All rights reserved. Material in this brochure or catalogue may not be reproduced in whole or in part, in any form, without written permission from the publisher.



**MANUFACTURING EXCELLENCE  
 IN GAS AND PETROCHEMICAL MEASUREMENT**

**RJ MACHINE CO.**

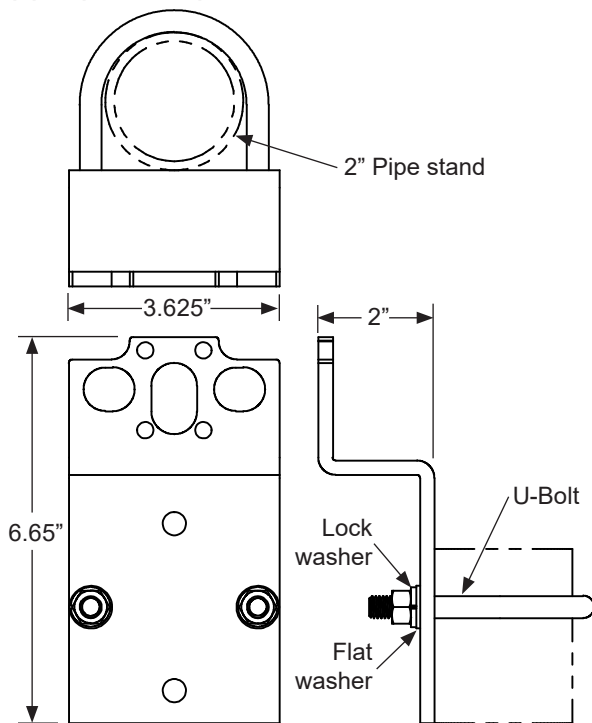
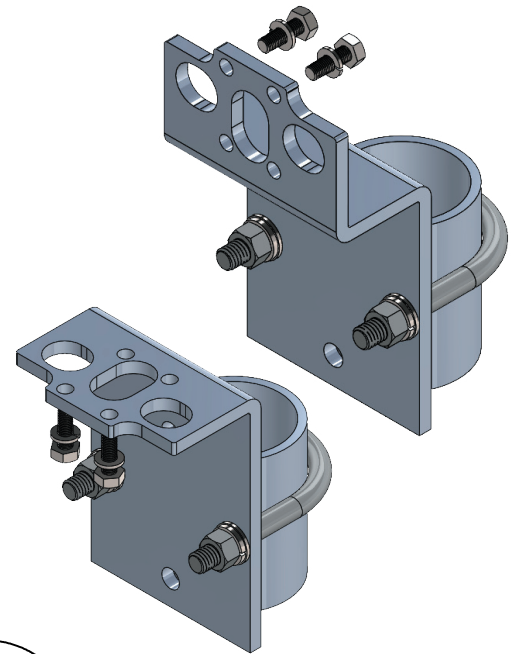




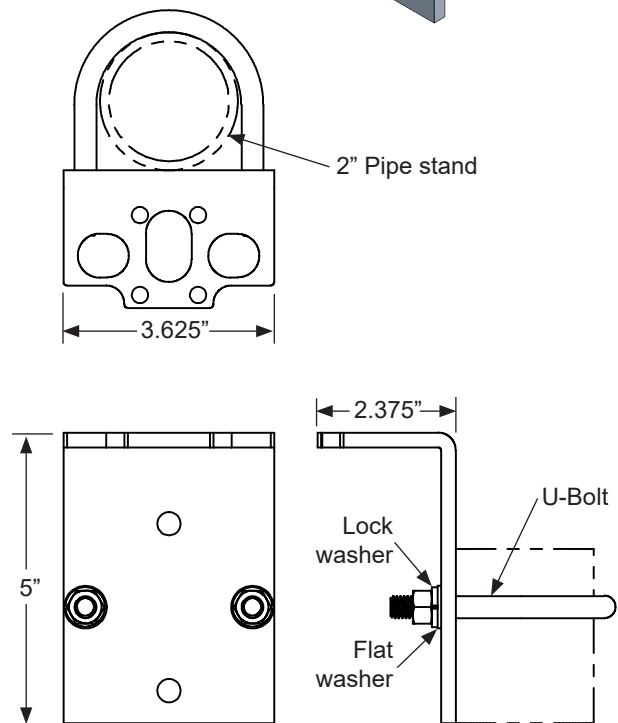
# AXVMB AND AXHMB MOUNTING BRACKETS

## Mounting Brackets

Mounting brackets are designed to mount the manifold, not the transmitter, to the pipe stand. This provides support for the manifold and the instrument tubing when the transmitter needs to be removed. The AXV(H) MBs are manufactured from  $\frac{1}{4}$ " thick material. Axis uses 316 SS as standard for our SS brackets with 316 SS bolting unlike most of our competitors who use 304 or 18-8 SS. AXIS also offers mounting brackets in Zinc plated CS. The AXVMBS is designed for vertical applications and the AXHMBs is designed for horizontal applications. The bracket is designed to accommodate bottom test ports, purge ports, and vent ports. The brackets may be ordered separately or with manifolds with the appropriate option code.



**Vertical Mounting Bracket**  
Model#: AXVMB200XX



**Horizontal Mounting Bracket**  
Model#: AXHMB200XX



MACHINE.CO.

**MANUFACTURING EXCELLENCE  
IN GAS AND PETROCHEMICAL MEASUREMENT**

**RJ MACHINE CO.**



**International  
IBC Body Certification**

**ISO 9001:2015**



# AXVMB AND AXHMB MOUNTING BRACKETS

## Product Numbering and Contact Information

Product Numbering					
Brand	Mount Direction	Type	Diameter of Pipe Stand	Material	Option
AX	V Vertical	MB Mounting bracket	200 Nominal 2 inch	SS Stainless steel (316SS)	S6 316 SS bolting
	H Horizontal			CS Carbon steel (Zinc plated)	
Example: model number <b>AXVMB200SS</b> is interpreted as, Mounting bracket, vertical, for 2" pipe stand, 316SS stainless steel.					
Mounting Bracket Kit includes: Mounting bracket, qty. 1 U-bolt, 3/8-24 UNF, 2-7/8" center span, 3-1/2" height, qty. 1 Hex nut, 3/8-24 UNF, qty. 2 Lock washer, 3/8", qty. 2 Flat washer, 3/8", qty. 2 Hex bolt, 1/4-28 UNF, 3/4" length, qty. 2 (for mounting manifold) Lock washer, 1/4", qty. 2 (for mounting manifold)					

Standard Compliances	
Standard	Description
ASME B31.1	Power Piping
ASME B31.3	Process Piping
ASME B16.34	Valves - Flanged, Thread, and Welding End
ISO 5208	Industrial valves - Pressure Testing of Metallic Valves
API 598	Valve Inspection and Testing
MSS SP-105	Instrument Valves for Code Application
MSS SP-25	Standard Marking Systems for Valves, Fittings, and Flanged Unions
IEC 61518	Mating dimensions between differential pressure (type) measuring instruments and flanged-on shut-off devices up to 413 bar (41,3 MPa)
ISO10474	Steel and Steel Products - Inspection Documents

### Contact information:

RJ Machine Co.  
 Corporate: 112 Northridge Road, Marble Falls, TX 78654  
 Office: 830.693.7493  
 Fax: 830.693.8614  
 Web: [www.rjmachineonline.com](http://www.rjmachineonline.com)  
 Order Online: [www.shoprjmachine.com](http://www.shoprjmachine.com)

### Representative/Distributor information:

The information contained herein is intended to be used as a guide to assist with product and service selection. While reasonable efforts have been made to ensure the accuracy and completeness of the content, RJ Machine Co. makes no representations as to the completeness or accuracy of the information contained herein. The customer is solely responsible for evaluating and selecting products and ensuring that all performance, safety and warning requirements are satisfied. RJ MACHINE CO. MAKES NO REPRESENTATIONS OR WARRANTIES, EITHER EXPRESS OR IMPLIED, INCLUDING WITHOUT LIMITATION ANY WARRANTIES OF MERCHANTABILITY OR FITNESS FOR A PARTICULAR PURPOSE WITH RESPECT TO THE INFORMATION SET FORTH HEREIN OR THE PRODUCT(S) TO WHICH THE INFORMATION REFERS. ACCORDINGLY, RJ MACHINE CO. SHALL NOT BE RESPONSIBLE FOR DAMAGES (OF ANY KIND OR NATURE, INCLUDING INCIDENTAL, INDIRECT, OR CONSEQUENTIAL DAMAGES) RESULTING FROM THE USE OF OR RELIANCE UPON THIS INFORMATION. Patents and Patents Pending in the U.S. and foreign countries. The products and specifications set forth in this brochure are subject to change without notice and RJ Machine Co. disclaims any and all liability for such changes. All third party trademarks including but not limited to logos, numbers and names referenced herein remain the property of their respective owners. Unless otherwise specifically identified as such, RJ Machine Co.'s use of third party trademarks does not indicate any relationship, sponsorship or endorsement between RJ Machine Co. and the owners of the trademarks. Any reference by RJ Machine Co. to third party trademarks is to identify the corresponding goods and shall be considered nominative fair use under applicable trademark law.  
 © 2023 by RJ Machine Co. All rights reserved. Material in this brochure or catalogue may not be reproduced in whole or in part, in any form, without written permission from the publisher.



MACHINE.CO.

**MANUFACTURING EXCELLENCE  
 IN GAS AND PETROCHEMICAL MEASUREMENT**

**RJ MACHINE CO.**



International  
**IBC** Body Certification

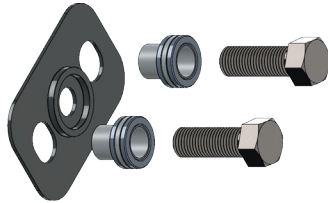
ISO 9001:2015

### Dielectric Kit (flange seal, bushing, and bolting) for stabilizer



Model#	<b>AXSDIKIT150XX</b>
Bolt length	150= 1.5" standard (other lengths available)
Bolt material XX	CS= Carbon steel, Gr. 8 SS= 304 SS S6= 316 SS

### Dielectric Kit (flange seal, bushing, and bolting) for manifold



Model#	<b>AXMDIKIT125XX</b>
Bolt length	125= 1.25" standard (other lengths available)
Bolt material XX	CS= Carbon steel, Gr. 8 SS= 304 SS S6= 316 SS

### Gasket for the flanges of manifold, stabilizer, etc.



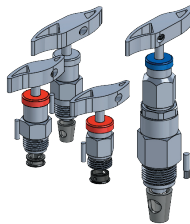
Model#	<b>AXGSKTIECBT</b>
Gasket material	T= PTFE standard (other materials available)
Note: Gasket is designed for the standard of IEC 61518, TYPE B groove	

### O-ring for the flanges of manifold, stabilizer, etc.



Model#	<b>AXOR117X-XX</b>
O-ring material X	A= FEPM V= FKM (other materials available)
Hardness XX	75= 75 Shore A for CS 95= 95 Shore A for SS
Note: O-ring is suitable for the standard of IEC 61518, TYPE B groove	

### Bonnet assemblies (includes pin and soft seat)



Model#	<b>AX2(3,6)BA6S(G)XXX</b>
Bore size	2= 1/8"; 3= 3/16"; 6= 3/8"
Bonnet material XX	CS= ASTM A105 SS= ASTM A182 GR.316
Seat material X	D= POM P= PEEK Z= ETFE(3/8" bore only)

### Bolting for the flanges of manifold, stabilizer, etc.



Model#	<b>AXB437-20-XXXXX</b>
Bolt length XXX	100= 1.0" 125= 1.25" 150= 1.50" 175= 1.75" (other lengths available)
Bolt material XX	CS= Carbon steel, Gr. 8 SS= 304 SS S6= 316 SS



# GENERAL PRODUCT NUMBERING & CONTACT INFORMATION

General Product Numbering									
Brand	Orifice	Type	Inlet Size	Inlet Type	Outlet Size	Outlet Type	Material	Packing	Seat
AX	2 1/8"	N(A)6G/M needle valve	2 1/8"	M male NPT pipe thread	2 1/8"	M male NPT pipe thread	SS ASTM A182 Gr. 316	A O-ring FEPM	D Soft seat POM
	3 3/16"	G6S/H gauge valve	4 1/4"	P female NPT pipe thread	4 1/4"	P female NPT pipe thread	CS ASTM A105 (Zinc)	V O-ring FKM	P Soft seat PEEK
	4 1/4"	B6S/H bleed valve	6 3/8"	FL 4-bolt flange	6 3/8"	FL 4-bolt flange		T PTFE packing	Z Soft seat ETFE
	6 3/8"	BB6S/H block & bleed valve	8 1/2"	MT male tube fitting	8 1/2"	CP 4-bolt Coplanar flange		G Graphite packing	empty Integral with body
		DBB6S/H Double block & bleed valve	12 3/4"	FT female tube fitting	12 3/4"	MT male tube fitting			
		GC4S Gas Chromatograph manifold	16 1"	Q quick calibration	16 1"	FT female tube fitting			
		ST Stabilized Futbol	24 1-1/2"	FS female socket weld	24 1-1/2"	Q quick calibration			
		ST6S stabilized connector	32 2"	MS male socket weld	32 2"	FS female socket weld			
		DGP6S DP to GP Adapter	empty 4-bolt flange	R150F NPS flange 150 class	empty 4-bolt flange	MS male socket weld			
		DDP Dual Delta P Adapter	empty ST type		empty ST type	R150F NPS flange 150 class			
		M5S 5-valve manifold	empty 1/2" female NPT		empty 1/2" female NPT				
		MA5S 90° Angle manifold			empty 4-bolt Coplanar				

## Contact information:

RJ Machine Co.  
 Corporate: 112 Northridge Road, Marble Falls, TX 78654  
 Office: 830.693.7493  
 Fax: 830.693.8614  
 Web: [www.rjmachineonline.com](http://www.rjmachineonline.com)  
 Order Online: [www.shoprjmachine.com](http://www.shoprjmachine.com)

## Representative/Distributor information:

The information contained herein is intended to be used as a guide to assist with product and service selection. While reasonable efforts have been made to ensure the accuracy and completeness of the content, RJ Machine Co. makes no representations as to the completeness or accuracy of the information contained herein. The customer is solely responsible for evaluating and selecting products and ensuring that all performance, safety and warning requirements are satisfied. RJ MACHINE CO. MAKES NO REPRESENTATIONS OR WARRANTIES, EITHER EXPRESS OR IMPLIED, INCLUDING WITHOUT LIMITATION ANY WARRANTIES OF MERCHANTABILITY OR FITNESS FOR A PARTICULAR PURPOSE WITH RESPECT TO THE INFORMATION SET FORTH HEREIN OR THE PRODUCT(S) TO WHICH THE INFORMATION REFERS. ACCORDINGLY, RJ MACHINE CO. SHALL NOT BE RESPONSIBLE FOR DAMAGES (OF ANY KIND OR NATURE, INCLUDING INCIDENTAL, INDIRECT, OR CONSEQUENTIAL DAMAGES) RESULTING FROM THE USE OF OR RELIANCE UPON THIS INFORMATION. Patents and Patents Pending in the U.S. and foreign countries. The products and specifications set forth in this brochure are subject to change without notice and RJ Machine Co. disclaims any and all liability for such changes. All third party trademarks including but not limited to logos, numbers and names referenced herein remain the property of their respective owners. Unless otherwise specifically identified as such, RJ Machine Co.'s use of third party trademarks does not indicate any relationship, sponsorship or endorsement between RJ Machine Co. and the owners of the trademarks. Any reference by RJ Machine Co. to third party trademarks is to identify the corresponding goods and shall be considered nominative fair use under applicable trademark law.  
 © 2023 by RJ Machine Co. All rights reserved. Material in this brochure or catalogue may not be reproduced in whole or in part, in any form, without written permission from the publisher.



MACHINE.CO.

**MANUFACTURING EXCELLENCE  
 IN GAS AND PETROCHEMICAL MEASUREMENT**

**RJ MACHINE CO.**



**International  
 IBC Body Certification**

**ISO 9001:2015**



# NATURAL GAS INSTRUMENT VALVES & MANIFOLDS

---

---

## NOTES

# AXIS

## NATURAL GAS INSTRUMENT VALVES & MANIFOLDS

---



**MANUFACTURING EXCELLENCE  
IN GAS AND PETROCHEMICAL MEASUREMENT**

**RJ MACHINE CO.**



**International  
IBC Body Certification**

**ISO 9001:2015**